

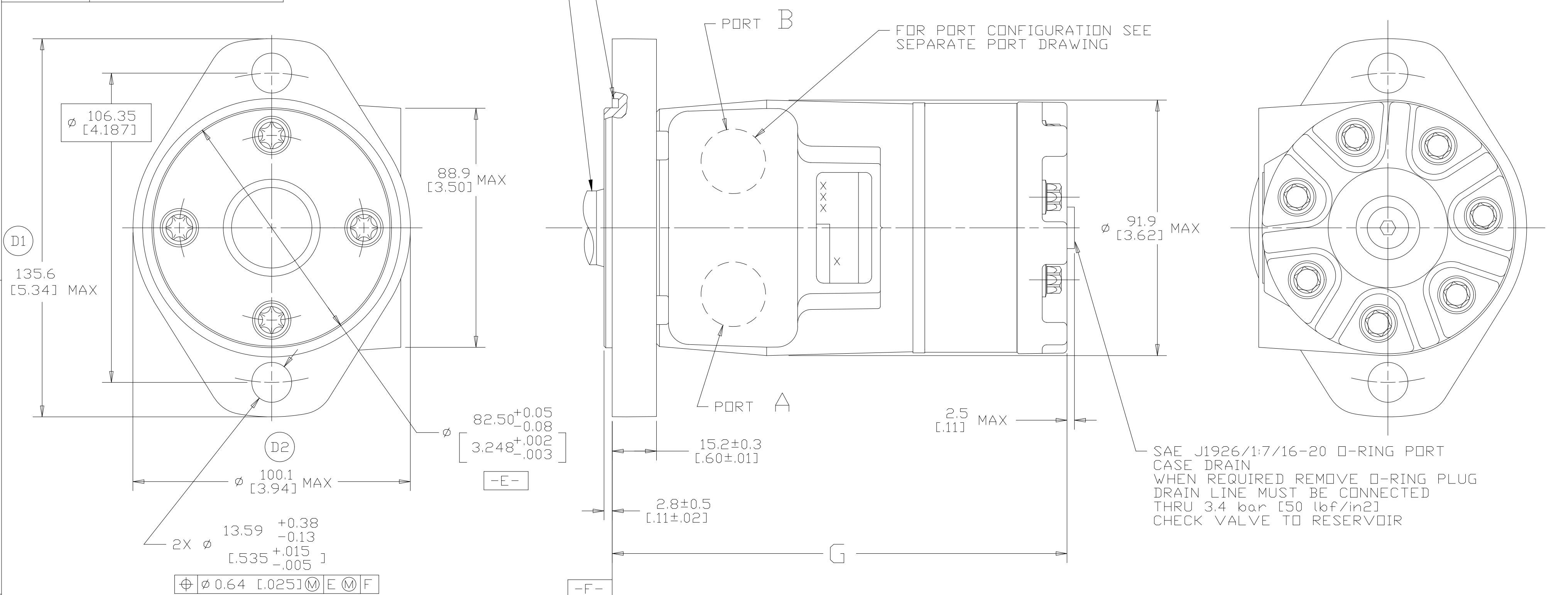
DISPL CODE	G	MAX
018	132.2	[5.21]
022	132.2	[5.21]
025	133.1	[5.24]
030	134.6	[5.30]
036	136.4	[5.37]
040	137.6	[5.42]
049	140.2	[5.52]
062	144.2	[5.68]
080	149.6	[5.89]
096	154.4	[6.08]
119	161.2	[6.35]
149	170.2	[6.70]
187	181.6	[7.15]
226	193.3	[7.61]
298	215.0	[8.46]

REV	DESCRIPTION	BY	DATE	ECN
A	ENGINEERING RELEASE	RAF	2-8-94	M11208
B	-1>(3C) 88.9 [3.50] MAX WAS 84.6 [3.33] MAX -2>(2C) Ø 91.9 [3.62] MAX WAS Ø 87.9 [3.46] MAX -3>(2B) ADDED "G" DIMENSION	JMM	10-26-94	26147
C	<4B>Ø13.59+0.38/-0.13 [.535+.015/-0.005] WAS Ø13.59±0.13 [.535±.005]	AGJ	1-28-02	39853
D	-1>(4C) WAS 131.4 [5.17] MAX. -2>(4B) WAS 96.8 [3.81] MAX.	AAK	04-07-04	46856
E	-1>(4D)UPDATED TABLE FOR DISPL CODE -2>(4A)NOTE 2 MOUNTING FLANGE WAS "A"	PM	03-27-07	0004355
F	-1>(4D)UPDATED TABLE FOR DISPL CODE -2>(4C)135.6[5.34] MAX WAS 133.9[5.27]MAX -3>(4B)Ø100.1[3.94]MAX WAS Ø98.3[3.87] MAX -4>(1B)PORT CALLOUT WAS 7/16-20 UNF-2B O-RING PORT, SIZE 4.....	AAB	04-11-11	M81825
G	<4A>NOTE 3 WAS CASE DRAIN: 1....	SSP	12-26-15	0068068_1

FOR SHAFT CONFIGURATION SEE SEPARATE SHAFT DRAWING

GROOVE PROVIDED FOR 82.6 [3.25] I.D. X 2.62 [.103] CROSS SECTION O-RING (DASH NO. 152)

FOR PORT CONFIGURATION SEE SEPARATE PORT DRAWING



NOTE

- ROTATION STANDARD WHEN FACING SHAFT END OF MOTOR SHAFT TO ROTATE CLOCKWISE WHEN PORT "A" IS PRESSURIZED COUNTERCLOCKWISE WHEN PORT "B" IS PRESSURIZED REVERSE WHEN FACING SHAFT END OF MOTOR, SHAFT TO ROTATE CLOCKWISE WHEN PORT "B" IS PRESSURIZED COUNTERCLOCKWISE WHEN PORT "A" IS PRESSURIZED
- MOUNTING FLANGE AA = STANDARD, 2 BOLT: Ø 82.6 [3.25] X 3.0 [.12] PILOT Ø 13.59 [.535] HOLES ON Ø 106.2 [4.18] BOLT CIRCLE
- CASE DRAIN 01 = 7/16-20 (END CAP)

REVIEWED FOR CLASSIFICATION PER ESP-042

UNLESS OTHERWISE SPECIFIED ALL DIMENSIONS ARE IN INCHES MILLIMETERS (INCHES) TOLERANCES .X ± ---- .XX ± ---- .XXX ± ---- < ± .--- UNSPECIFIED RADII ARE: ---- UNSPECIFIED DRAFT ANGLES ARE: ---- D SIZE	DRAWING BASED ON ANSI Y14.5M-1982			
	THE REPRODUCTION, DISTRIBUTION AND UTILIZATION OF THIS DOCUMENT AS WELL AS THE COMMUNICATION OF ITS CONTENTS TO OTHER WITHOUT EXPLICIT AUTHORIZATION IS PROHIBITED. OFFENDERS WILL BE HELD LIABLE FOR THE PAYMENT OF DAMAGES. ALL RIGHT RESERVED IN THE EVENT OF THE GRANT OF A PATENT, UTILITY MODEL OR DESIGN. (PER ISO 16016)			
	DRAWN BY/DATE: RAF 2/4/94 CHECKED BY/DATE: SDR 2/23/94 ENGRG BY/DATE: RVA 3/3/94 METALLURGY BY/DATE: ----	MATERIAL/HEAT TREAT: -		TITLE: -
	THIRD ANGLE PROJECTION DO NOT SCALE	MICROINCHES (MICROMETERS) [MICROMETERS] <input type="checkbox"/> [X] ARITHMETICAL AVERAGE		NUMBER: A-821-003 SCALE: 1/1 SHEET 1 OF 1