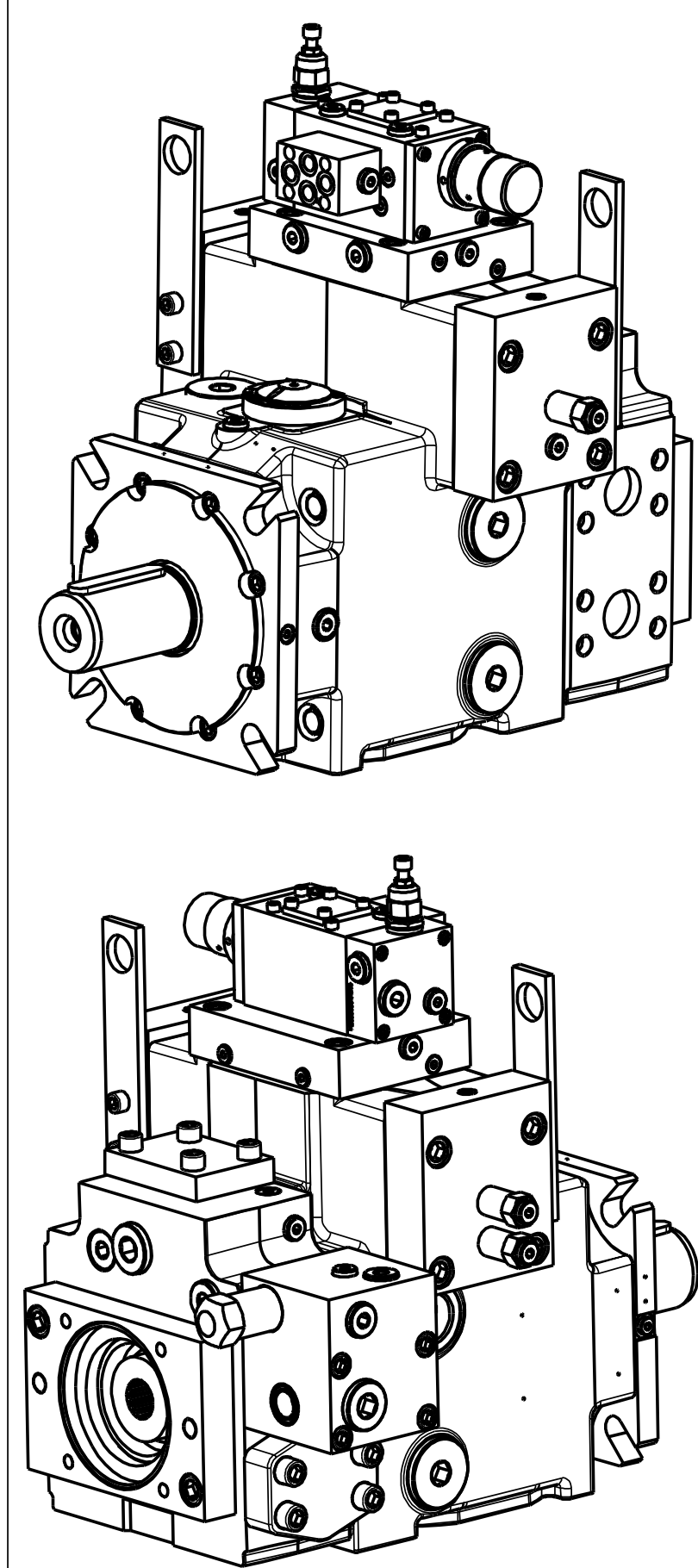
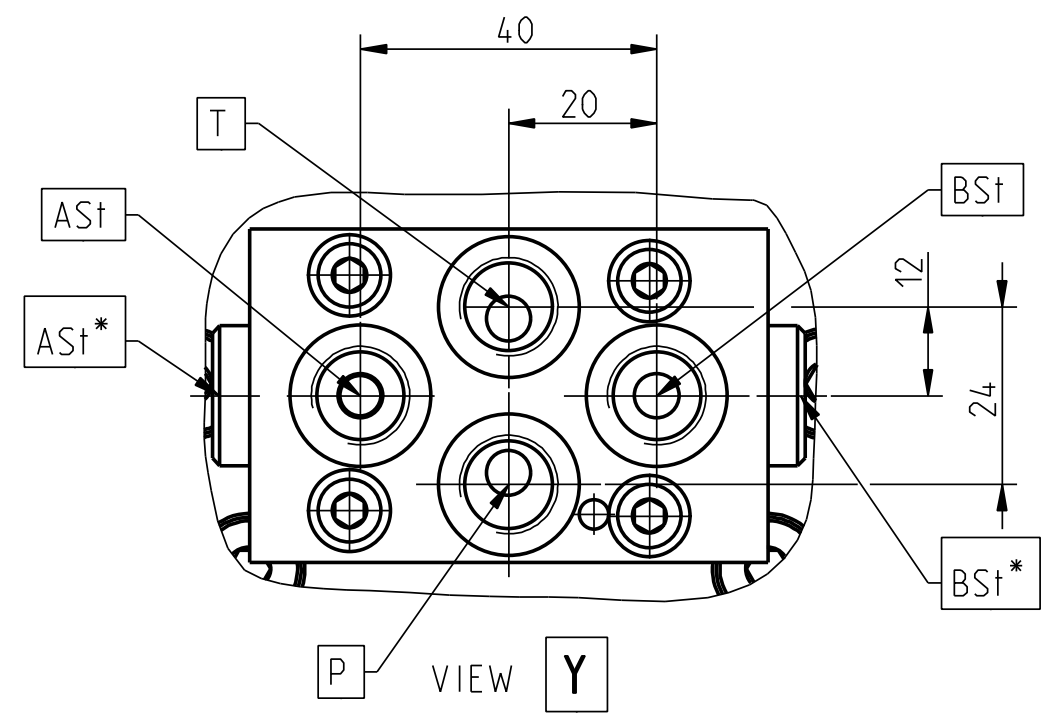
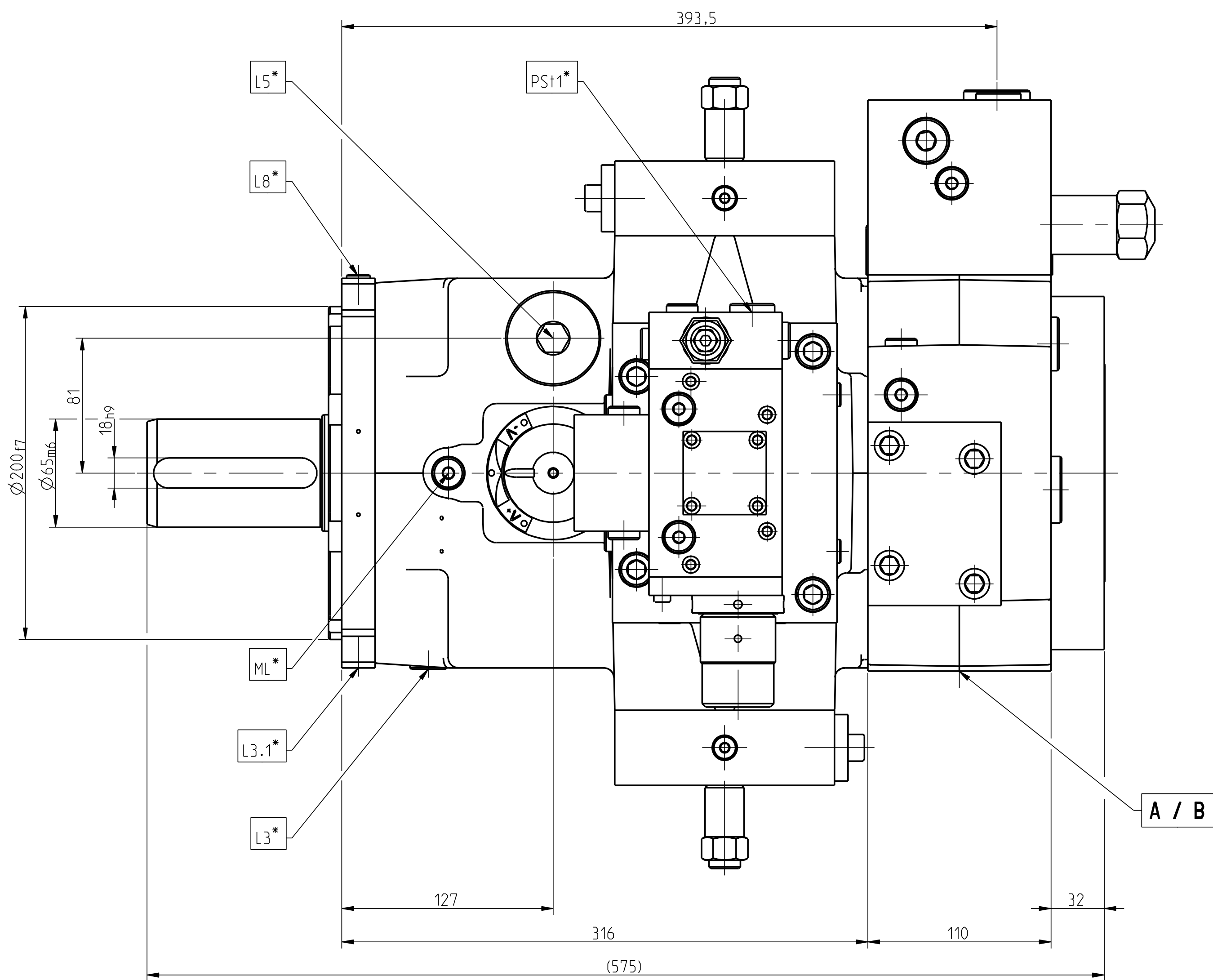
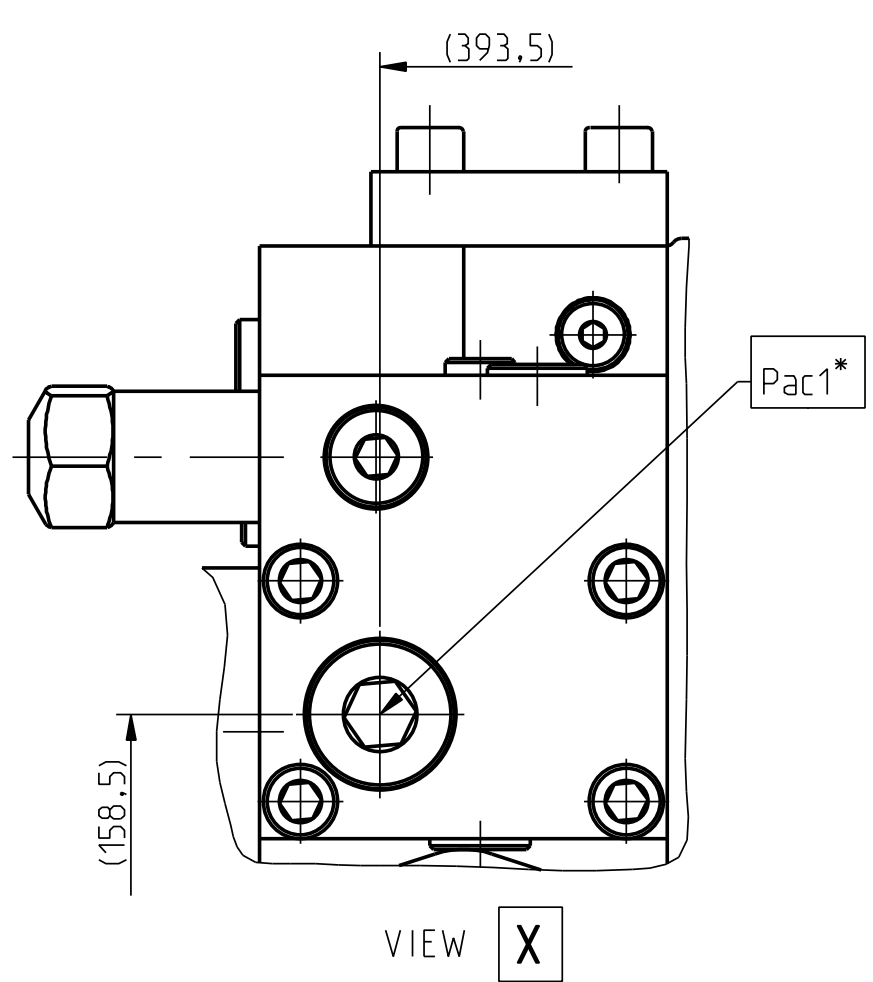
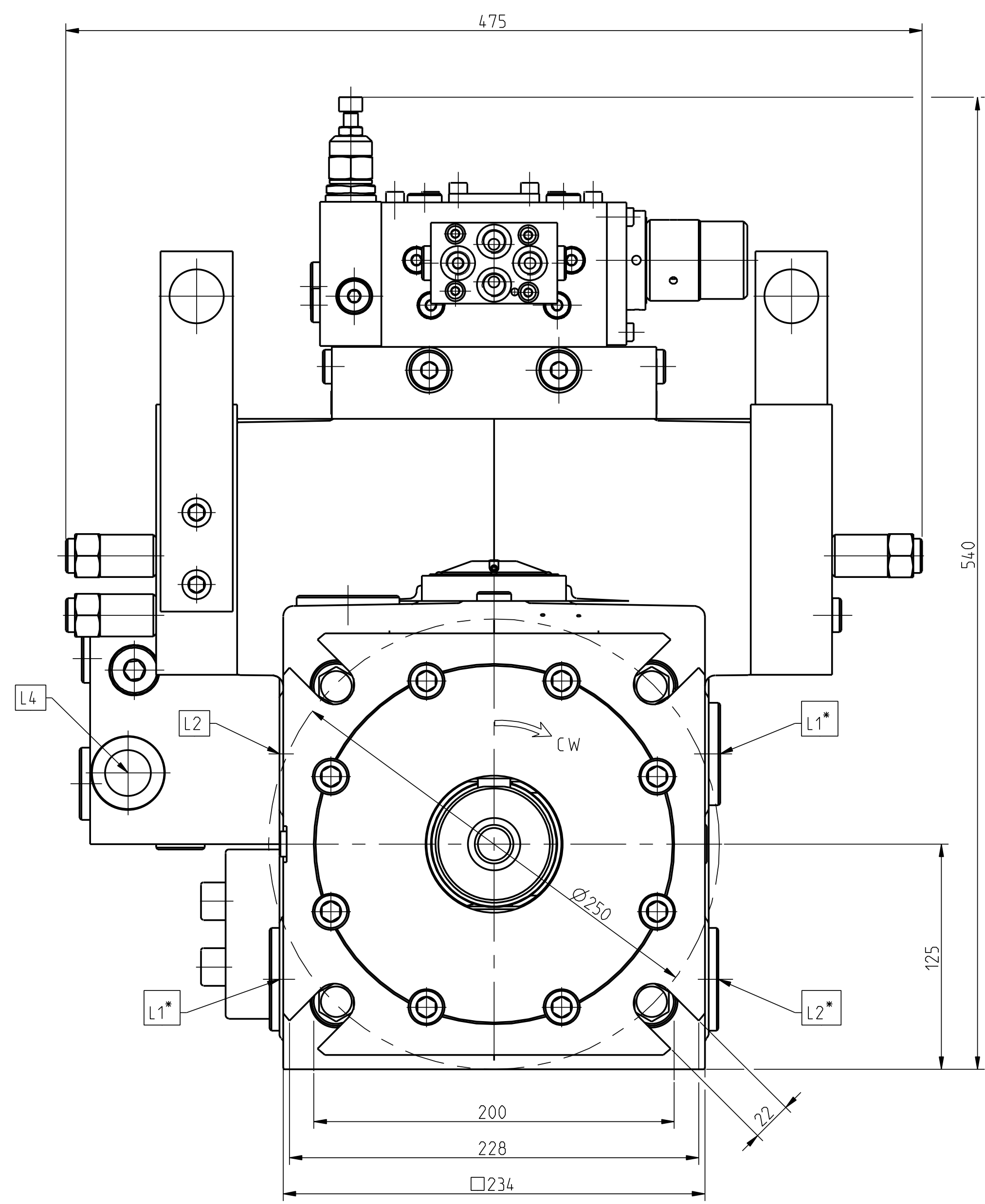
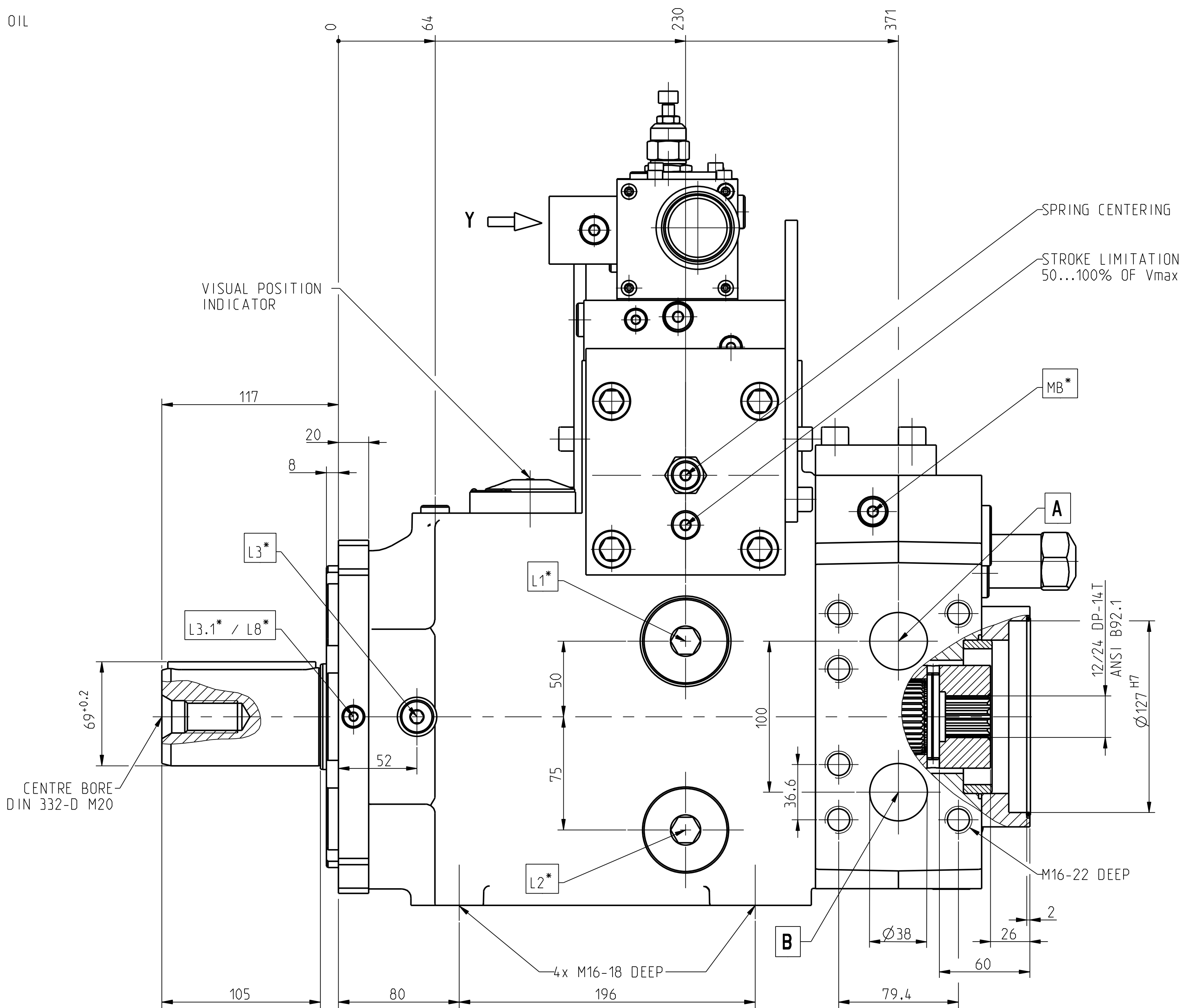
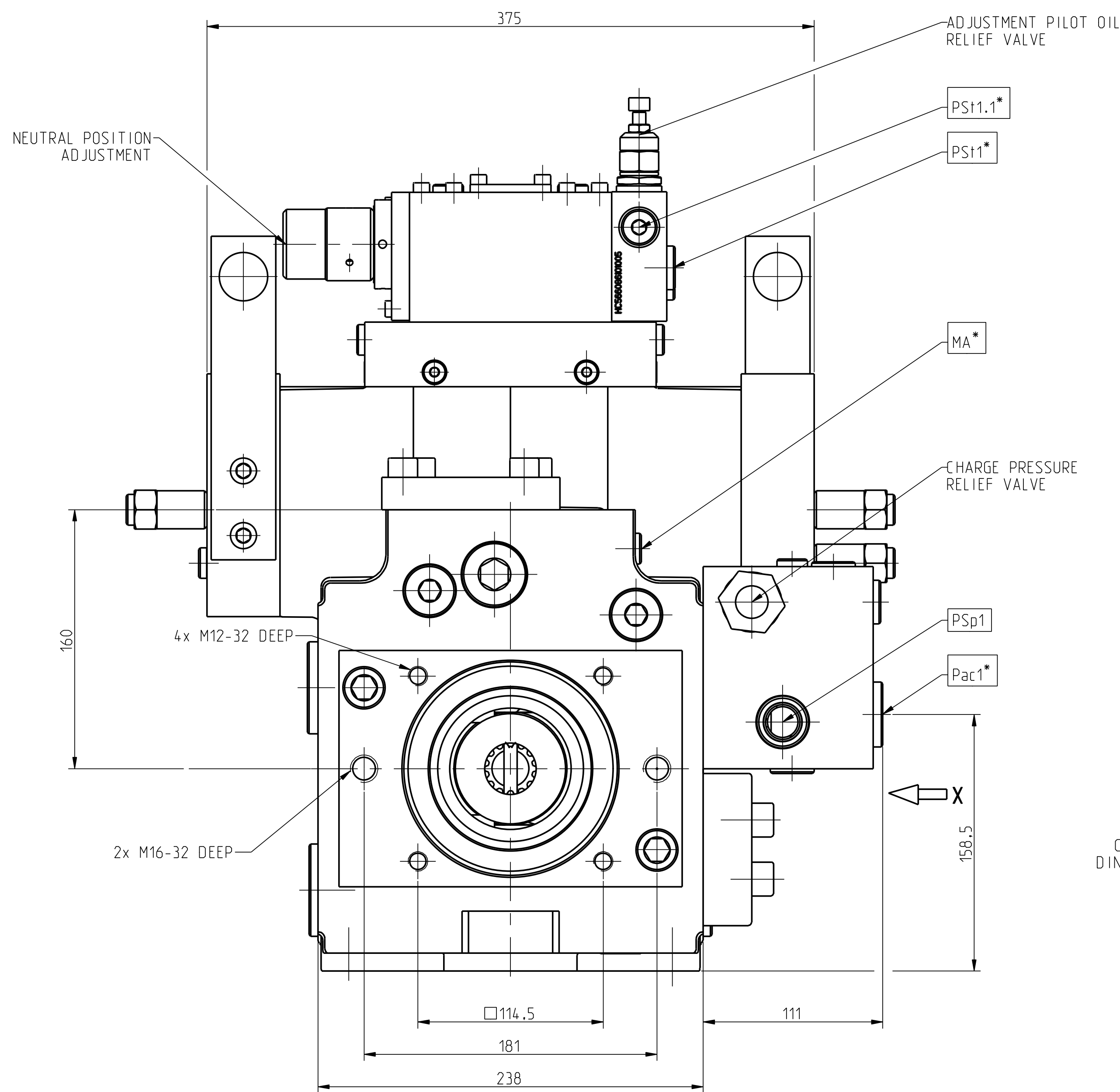


CAE DRAWING *** DO NOT CHANGE ORIGINAL				
REVISIONS				
ZONE	LTR	DESCRIPTION	DATE	APPROVED
K		ENGINEERING RELEASE	2012-10-25	J.Vollberg



A	SYSTEM PRESSURE PORT SAE 1 1/2" - 6000 PSI
B	SYSTEM PRESSURE PORT SAE 1 1/2" - 6000 PSI
L1	DRAIN PORT 1 5/8"-12 UNF-2B (ACCORDING TO MOUNTING POSITION USE UPPER PORT)
L2	DRAIN PORT G 1 1/4" (ACCORDING TO MOUNTING POSITION USE UPPER PORT)
L3	VENTILATION PORT FOR VERTICAL MOUNTING G 3/8" (SHAFT UPWARD)
L3.1	PORT G 1/8"
L4	DRAIN PORT (CHARGE OIL) G 1"
L5	OIL FILLING PLUG 1 1/16"-12 UNF-2B
L8	AIR BLEEDING PORT G 1/4"
MA	GAUGE PORT SYSTEM PRESSURE G 1/4"
MB	GAUGE PORT SYSTEM PRESSURE G 1/4"
ML	GAUGE PORT OF CASE PRESSURE G 1/4"
Pac1	ACCUMULATOR PORT G 1"
PSP1	EXTERNAL PORT OF CHARGE PRESSURE G 3/4"
PS1	PORT OF PILOT PRESSURE G 1/2"
PS1.1	PORT OF PILOT PRESSURE G 3/8"
AS1	G 1/4"
BS1	G 1/4"
P	G 1/4"
T	G 1/4"
...	NORMALLY PLUGGED

DIRECTION OF ROTATION	CONTROL	INPUT	OUTPUT
RIGHT HAND ROTATION	TO +V _{MAX} TO -V _{MAX}	B A	A B

THE REPRODUCTION, DISTRIBUTION, AND UTILIZATION OF THIS DOCUMENT, AS WELL AS THE COMMUNICATION OF ITS CONTENTS TO OTHERS WITHOUT EXPLICIT AUTHORIZATION IS PROHIBITED. OFFENDERS WILL BE HELD LIABLE FOR THE PAYMENT OF DAMAGES. ALL RIGHTS RESERVED IN THE EVENT OF THE GRANT OF A PATENT, UTILITY MODEL, OR DESIGN (PER ISO 15916)

FIRST ANGLE PROJECTION	REF: MPS87184/HC 056176005001	REV: HC
DRAWN: R.Kunduj	2012-10-25	
CHECKED: J.Vollberg	2012-10-25	
PROJ:		
HEAT TREATMENT	FUNDAMENTAL TOLERANCES PER ISO 2768-MS	
FINISHING	GENERAL DIMENSIONAL AND GEOMETRIC TOLERANCES PER ISO 2768-MS	
ALL TECHNICAL DATA COLLECTED HEREIN IS THE PROPERTY OF DANFOSSE-GERMANY AND IS NOT TO BE USED FOR MANUFACTURE, REPRODUCTION OR DISCLOSURE TO OTHERS WITHOUT PERMISSION BY THE OWNER	SCALE: 1:2	WEIGHT: -
TITEL		REVISION
INSTALLATION OF TVWS-360... WITH DPH00A...-CONTROL		K
SIZE: A0	HC 056176005001	1 OF 1

HC 056176005001