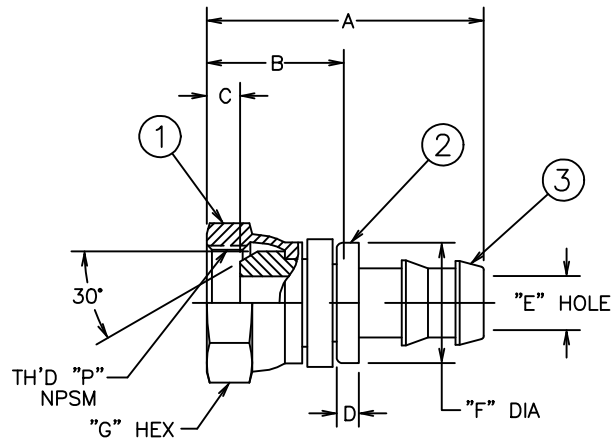


PART NUMBER	TH'D "P"	A REF	B REF	C REF	D REF	E REF	F ±.010	G REF
FC5853-0404S	1/4-18	1.64	.89	.25	.16	.17	.615	.69
FC5853-0606S	3/8-18	1.75	.89	.25	.16	.30	.725	.88
FC5853-0808S	1/2-14	2.03	1.01	.33	.16	.39	.870	1.00
FC5853-0810S	1/2-14	2.55	1.01	.33	.16	.48	1.065	1.00
FC5853-1212S	3/4-14	2.63	1.11	.30	.16	.61	1.185	1.25

REVISIONS			
REV.	DESCRIPTION	DATE	APPROVED
D	REDRAWN ON CAD - LAST REV. "C"	3-20-92	EN-F12791 ER-F12791



FC5853-1212S	2045-3-12S	4213-1-12B	FC1017-1212S		
FC5853-0810S	2045-3-8S	4213-1-10B	FC1017-0810S		
FC5853-0808S	2045-3-8S	4213-1-8B	FC1017-0808S		
FC5853-0606S	2045-3-6S	4213-1-6B	FC1017-0606S		
FC5853-0404S	2045-3-4S	4213-1-4B	FC1017-0404S		
PART NUMBER	① NUT	② HOSE CAP	③ NIPPLE		

LIST OF MATERIALS

ITEM NO.	MATERIAL	DRAWN TERRY BAKER	DATE 3-20-92	FLUID CONVEYANCE DIVISION	
1	STEEL	CHECKED R.D. GARRETT	DATE 3-25-92	DRAWING TITLE FITTING ASSEMBLY FEMALE NPSM SWIVEL, 2556 HOSE	
2	BRASS	APPROVED R.D. GARRETT	DATE 3-25-92		
3	STEEL	RELEASED EN-F12791	DATE 3-25-92		
		PROJECT NO. ER-F12791	APC NO.	SIZE C	(CAGE) CODE NO. 01276
		DESIGN APPROVED		DRAWING NUMBER FC5853-S	SHEET
		APPROVED		U	

THE REPRODUCTION, DISTRIBUTION AND UTILIZATION OF THIS DOCUMENT AS WELL AS THE COMMUNICATION OF ITS CONTENTS TO OTHER WITHOUT EXPLICIT AUTHORIZATION IS PROHIBITED. OFFENDERS WILL BE HELD LIABLE FOR THE PAYMENT OF DAMAGES. ALL RIGHT RESERVED IN THE EVENT OF THE GRANT OF A PATENT, UTILITY MODEL OR DESIGN. (PER ISO 16016)

CONVERTED DRAWING CADAM to AutoCAD 8/98

DWG. NO. FC5853-S SH. D