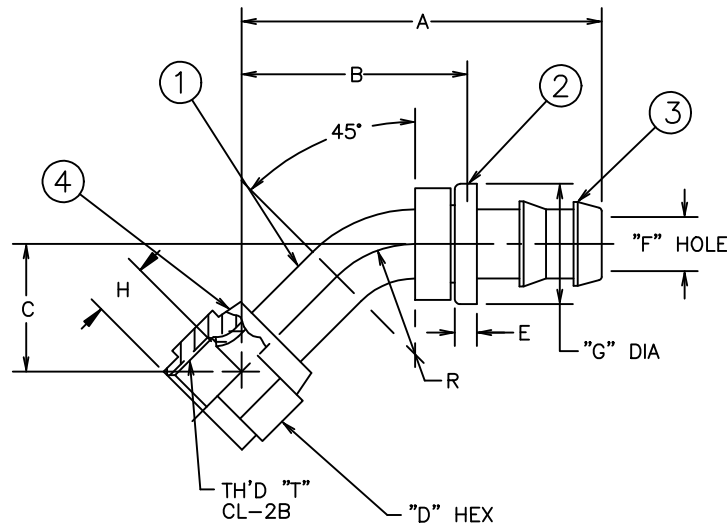


PART NUMBER	TH'D "T"	A	B	C	D	E	F	G	H	R
FC5848-0606S	5/8-18	±.062	REF	±.062	REF	REF	REF	±.010	REF	REF
		1.797	.93	.394	.75	.16	.24	.725	.45	.50

REVISIONS			
REV.	DESCRIPTION	DATE	APPROVED
B	REDRAWN ON CAD - LAST REV. "A" (1) .24 WAS .30 (2) NOTE #1(b) WAS: "CADMIUM PLATE PER ACES 16P6" (3) .50 WAS 1.00	3-19-92	EN-F12791 ER-F12791
C	(1) ADDED NOTE #3	9-22-92 P.T.R.	EN-F13373 DAI-23967



ⓑ

ⓒ

DWG. NO. FC5848-S SH. C

CONVERTED DRAWING CADAM to AutoCAD 8/98

3. CAN BE MADE FROM TUBING PER SPECIFICATIONS ON ELBOW DRAWING. ⓐ
2. FOR OTHER SIZES, SEE FC5849-S.
1. PROCESS AS FOLLOWS: ⓑ
- (a) BRAZE PER ACES 67P2 OR P3.
 - (b) ZINC PLATE PER ACES 16P47.
 - (c) ASSEMBLE NUT AND FLARE PER FF481.
 - (d) ASSEMBLE CAP.

THE REPRODUCTION, DISTRIBUTION AND UTILIZATION OF THIS DOCUMENT AS WELL AS THE COMMUNICATION OF ITS CONTENTS TO OTHER WITHOUT EXPLICIT AUTHORIZATION IS PROHIBITED. OFFENDERS WILL BE HELD LIABLE FOR THE PAYMENT OF DAMAGES. ALL RIGHT RESERVED IN THE EVENT OF THE GRANT OF A PATENT, UTILITY MODEL OR DESIGN. (PER ISO 16016)

FC5848-0606S	404501-6S	4213-1-6B	4131-6S	210222-6S	
PART NUMBER	ⓑ ELBOW	ⓐ	ⓒ HOSE CAP	ⓑ NIPPLE	ⓒ NUT
LIST OF MATERIALS					
ITEM NO.	MATERIAL	DRAWN	DATE	FLUID CONVEYANCE DIVISION	
1	STEEL	TERRY BAKER	3-19-92	 DRAWING TITLE FITTING ASSEMBLY 45°, SAE 45° SWIVEL, 2556 HOSE	
2	BRASS	CHECKED R.D. GARRETT	3-25-92		
3	STEEL	APPROVED R.D. GARRETT	3-25-92		
4	STEEL	RELEASED EN-F12791	3-25-92		
		PROJECT NO. ER-F12791	APC NO.	SIZE C	(CAGE) CODE NO. 01276
		DESIGN APPROVED		DRAWING NUMBER	FC5848-S
		APPROVED			SHEET U