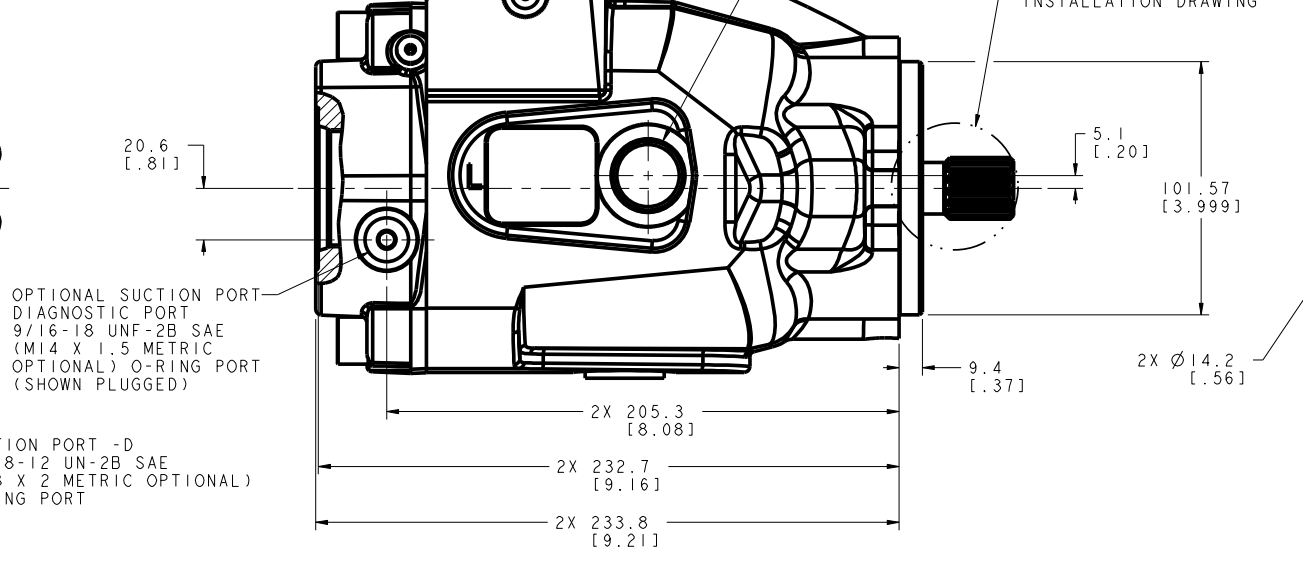
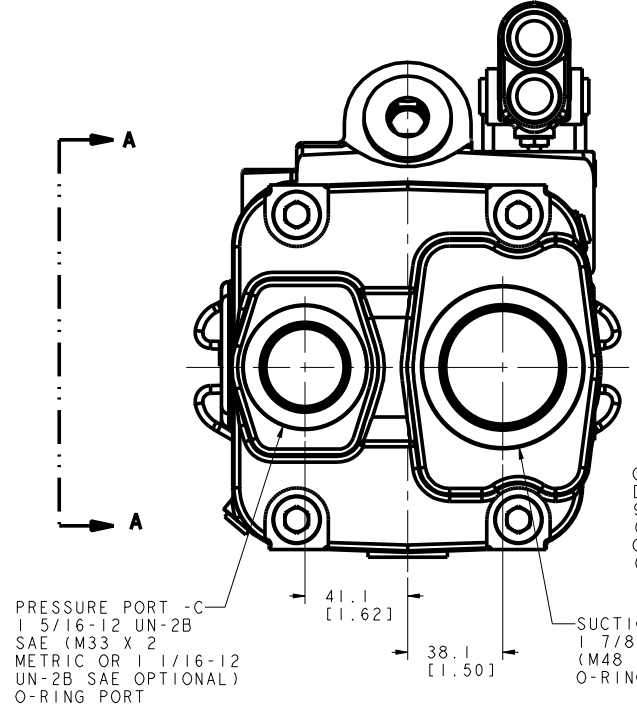
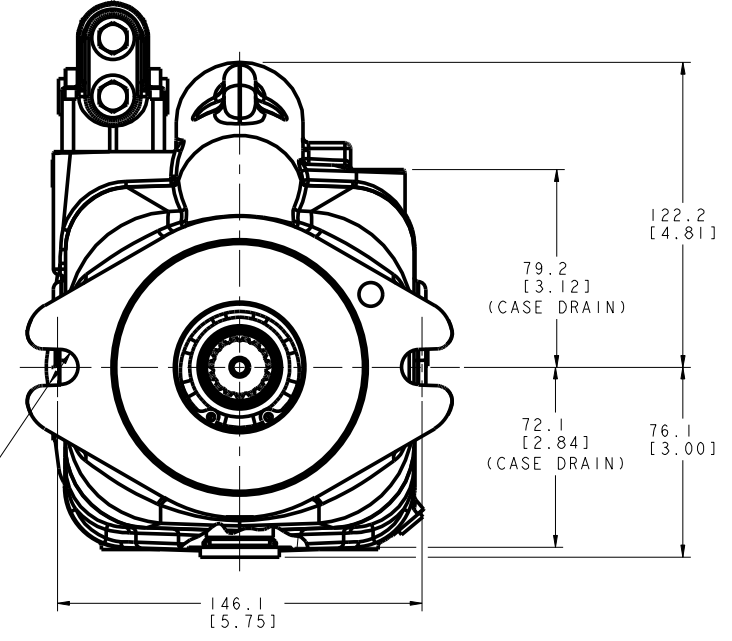
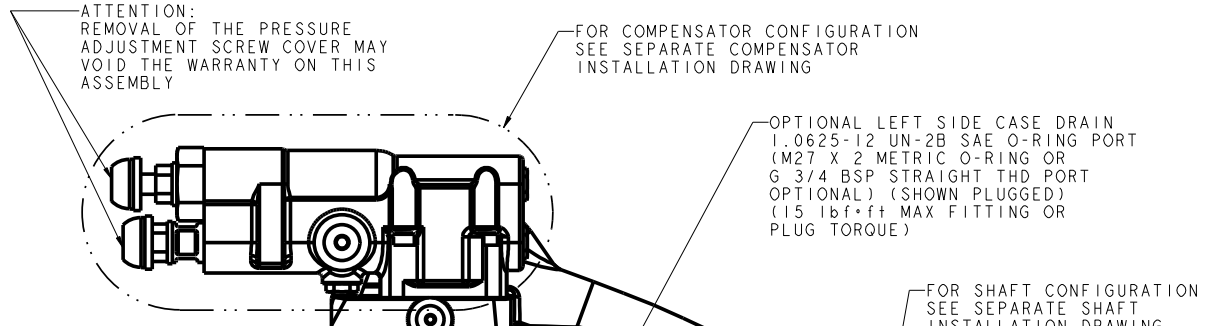
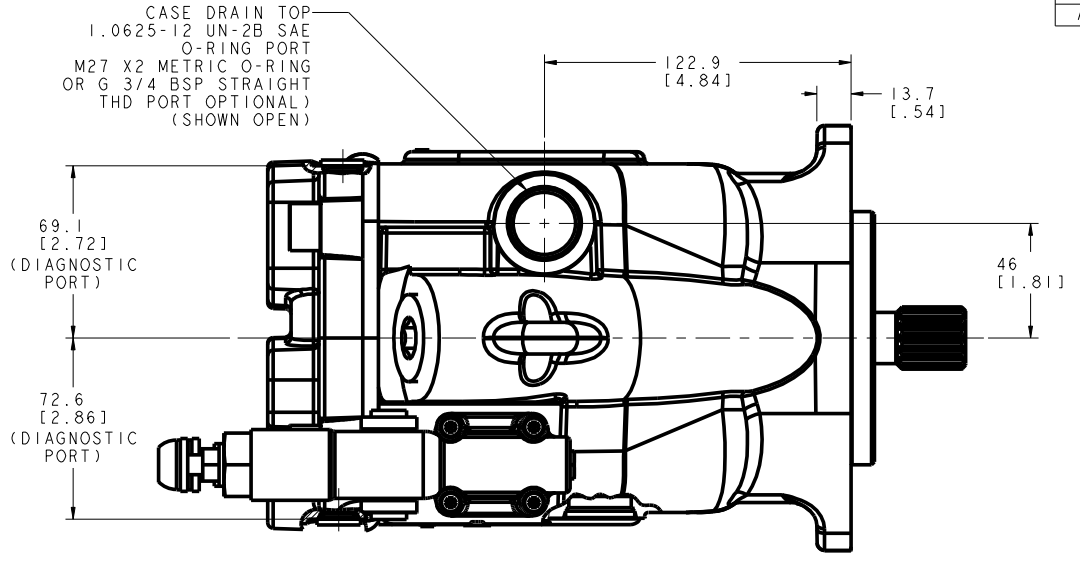


REV	DESCRIPTION	BY	CHK	DATE	ECN / MPS
A	ENGINEERING RELEASE	SVJ	SSC	09-03-10	M79899



NOTE  
1 UNIT MUST BE INSTALLED IN SUCH A POSITION THAT THE CASE DRAIN ASSURES AN OIL LEVEL AT OR ABOVE UNIT CENTER LINE BEFORE STARTING

UNLESS OTHERWISE SPECIFIED ALL DIMENSIONS ARE IN INCHES  MILLIMETERS (INCHES)

TOLERANCES  
XX ± .005  
XXX ± .010  
ONLY ± .015

UNSPECIFIED RADII ARE: ---  
UNSPECIFIED DRAFT ANGLES ARE: ---

THIRD ANGLE PROJECTION  
DO NOT SCALE

ARITHMETICAL AVERAGE

REVIEWED FOR CLASSIFICATION PER ESP-042

DRAWING BASED ON ANSI Y14.5M-1982

THE REPRODUCTION, DISTRIBUTION, AND UTILIZATION OF THIS DOCUMENT, AS WELL AS THE COMMUNICATION OF ITS CONTENTS TO OTHERS WITHOUT EXPLICIT AUTHORIZATION IS PROHIBITED. OFFENDERS WILL BE HELD LIABLE FOR THE PAYMENT OF DAMAGES. ALL RIGHTS RESERVED IN THE EVENT OF THE GRANT OF A PATENT, UTILITY MODEL, OR DESIGN. (PER ISO 16016)

**Danfoss**

MATERIAL/HEAT TREAT ---

DRAWN SVJ BY/DATE 09-08-10  
CHECKED SSC BY/DATE 09-13-10  
ENGRG RNA BY/DATE 09-03-10  
METALLURGY --- BY/DATE ---

TITLE  
SERIES 420 PUMP INSTALLATION

NUMBER  
A-3230-012

SCALE 1/1 SHEET 1 OF 1

