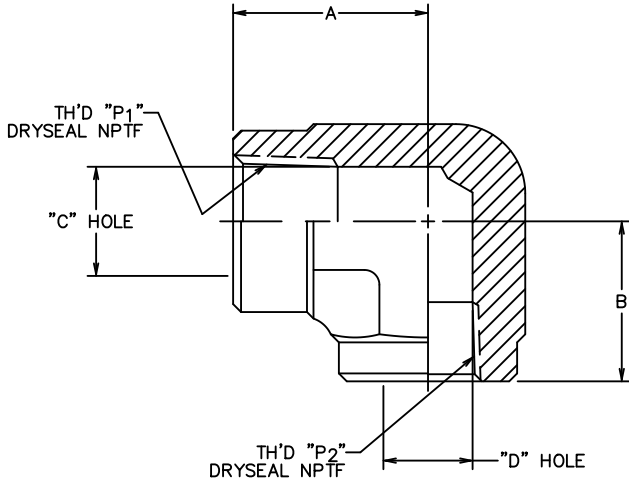


PART NUMBER	WEATHERHEAD CATALOG NUMBER	TH'D "P ₁ "	TH'D "P ₂ "	A REF	B REF	C REF	D REF
2087-2-2S	C3509X2	1/8-27	1/8-27	.66	.66	.29	.29
2087-4-2S	C3509X4X2	1/4-18	1/8-27	.88	.67	.39	.29
2087-4-4S	C3509X4	1/4-18	1/4-18	.88	.88	.39	.39
2087-6-4S	C3509X6X4	3/8-18	1/4-18	1.02	1.01	.53	.39
2087-6-6S	C3509X6	3/8-18	3/8-18	1.02	1.02	.53	.53
2087-8-6S	C3509X8X6	1/2-14	3/8-18	1.23	1.01	.65	.53
2087-8-8S	C3509X8	1/2-14	1/2-14	1.23	1.23	.65	.65
2087-12-8S	C3509X12X8	3/4-14	1/2-14	1.36	1.35	.85	.65
2087-12-12S	C3509X12	3/4-14	3/4-14	1.36	1.36	.85	.85
2087-16-12S	C3509X16X12	1-11 1/2	3/4-14	1.62	1.39	1.06	.85
2087-16-16S	C3509X16	1-11 1/2	1-11 1/2	1.62	1.62	1.06	1.06
2087-20-20S	C3509X20	1 1/4-11 1/2	1 1/4-11 1/2	1.70	1.70	1.40	1.40
2087-24-24S	C3509X24	1 1/2-11 1/2	1 1/2-11 1/2	2.08	2.08	1.64	1.64
2087-32-32S	C3509X32	2-11 1/2	2-11 1/2	2.39	2.39	2.19	2.19

AC 1

AB 1



REVISIONS			
REV	DESCRIPTION	DATE	APPROVED
AB	REDRAWN 1) WEATHERHEAD CATALOG NUMBER WAS ONLY "C3509X6"	2004-01-08 DS/W.R.H.	EN-F25542 DP-1513
AC	1) ADDED PART #2087-32-32S 2) ADDED NOTE #2 AND #3	2016-11-03 SBD	0128580- ECO DP-1299
AD	1) FINISH WAS "ZINC PLATE PER ES 2751"	2018-12-20 VRN	CO-0177889

- 3. ZINC PLATE PER ES 2751DB.
- 2. DIMENSIONS ARE IN INCHES.
- 1. MATERIAL: STEEL

AC 2 AC 1

DRAWN DSnyder	Danfoss FLUID CONVEYANCE DIVISION		
CHECKED W.R.HYDE	DRAWING TITLE		
APPROVED W.R.HYDE	ADAPTER		
RELEASE DATE 2003-01-09	90° PIPE ELBOW		
EN-F25542	(SAE #140238)		
DP-1513	SIZE A2	DRAWING NUMBER 2087-S	REV AD
THIRD ANGLE PROJECTION	SCALE NONE	DIST U	CAGE CODE 01276
SHEET			
THE REPRODUCTION, DISTRIBUTION AND UTILIZATION OF THIS DOCUMENT AS WELL AS THE COMMUNICATION OF ITS CONTENTS TO OTHERS WITHOUT EXPLICIT AUTHORIZATION IS PROHIBITED. OFFENDERS WILL BE HELD LIABLE FOR THE PAYMENT OF DAMAGES. ALL RIGHT RESERVED IN THE EVENT OF THE GRANT OF A PATENT, UTILITY MODEL OR DESIGN. (PER ISO 16016)			