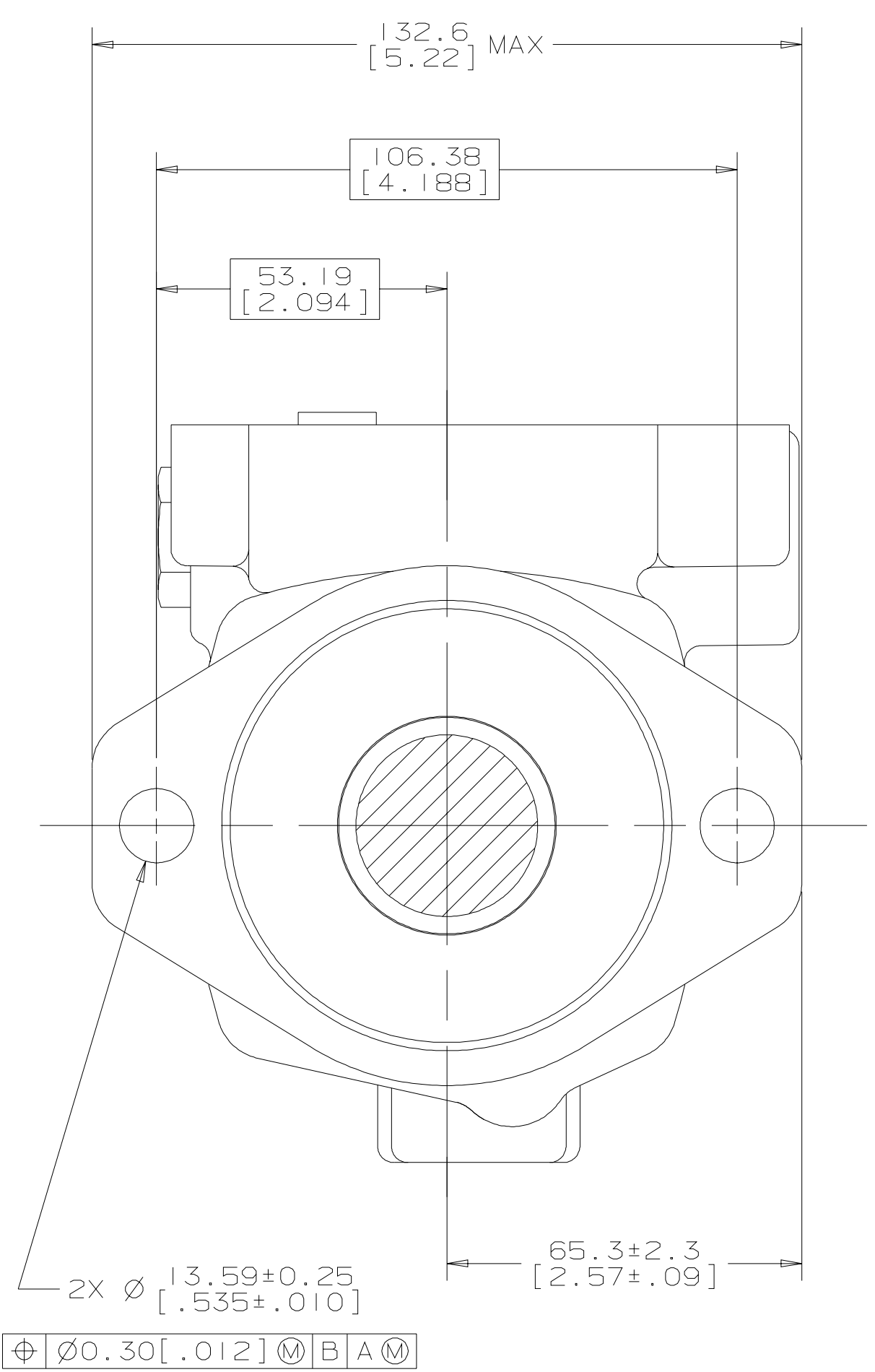
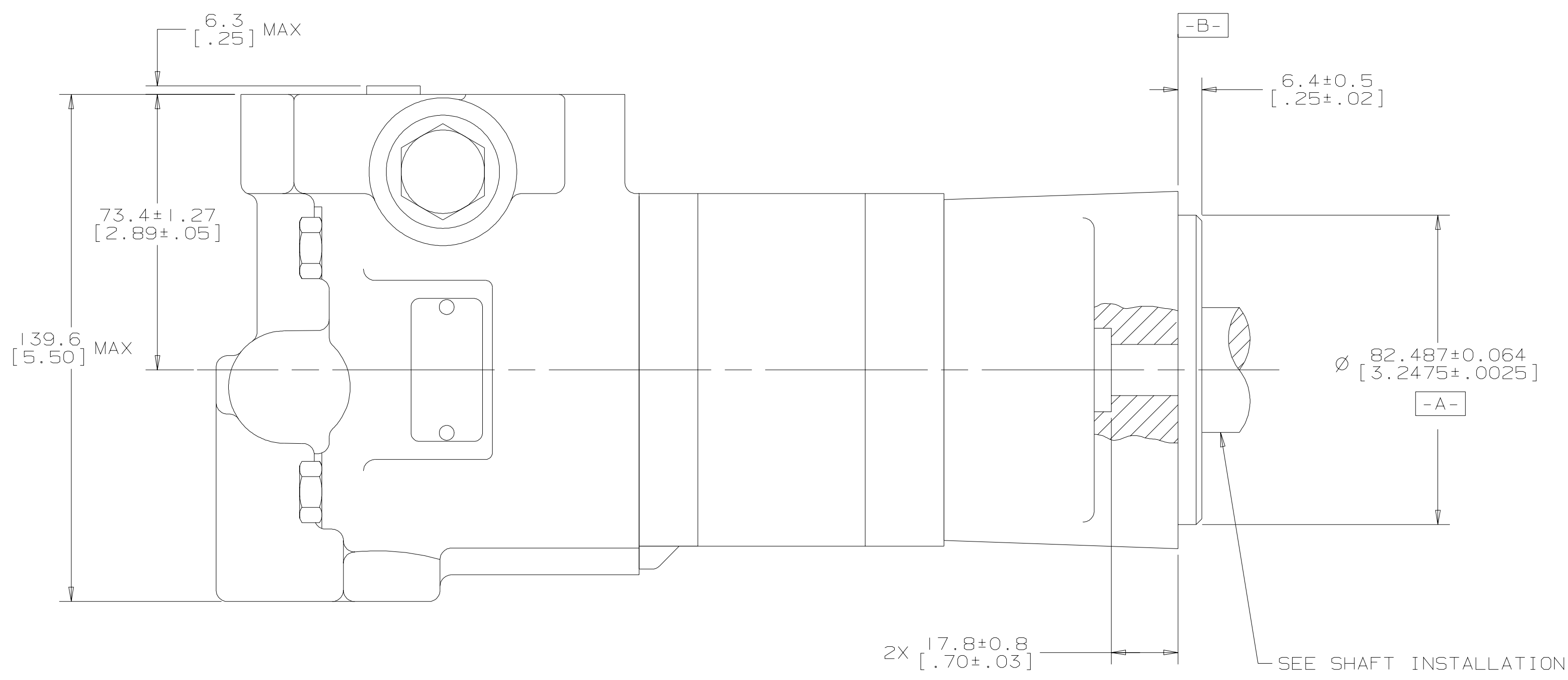
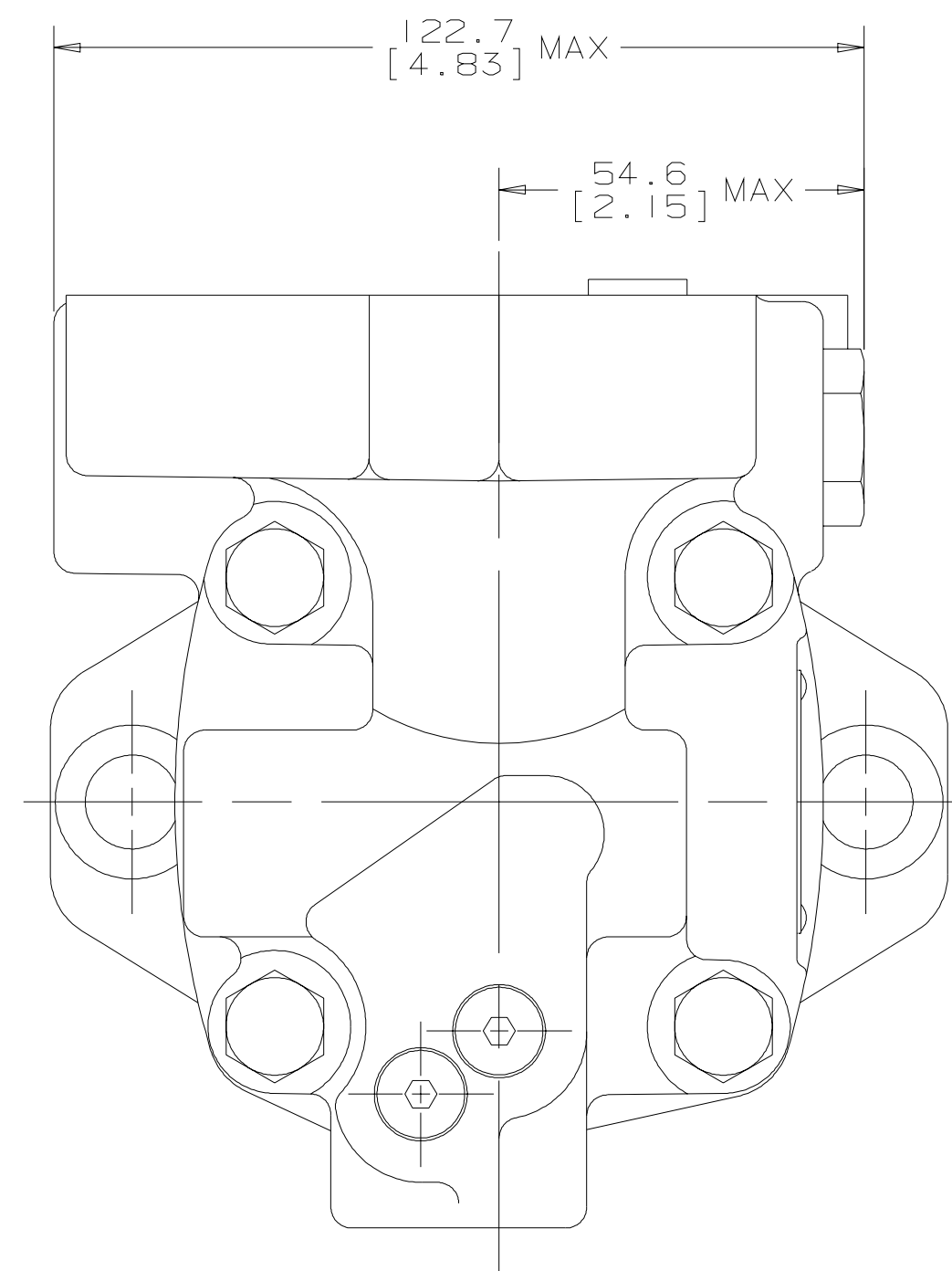
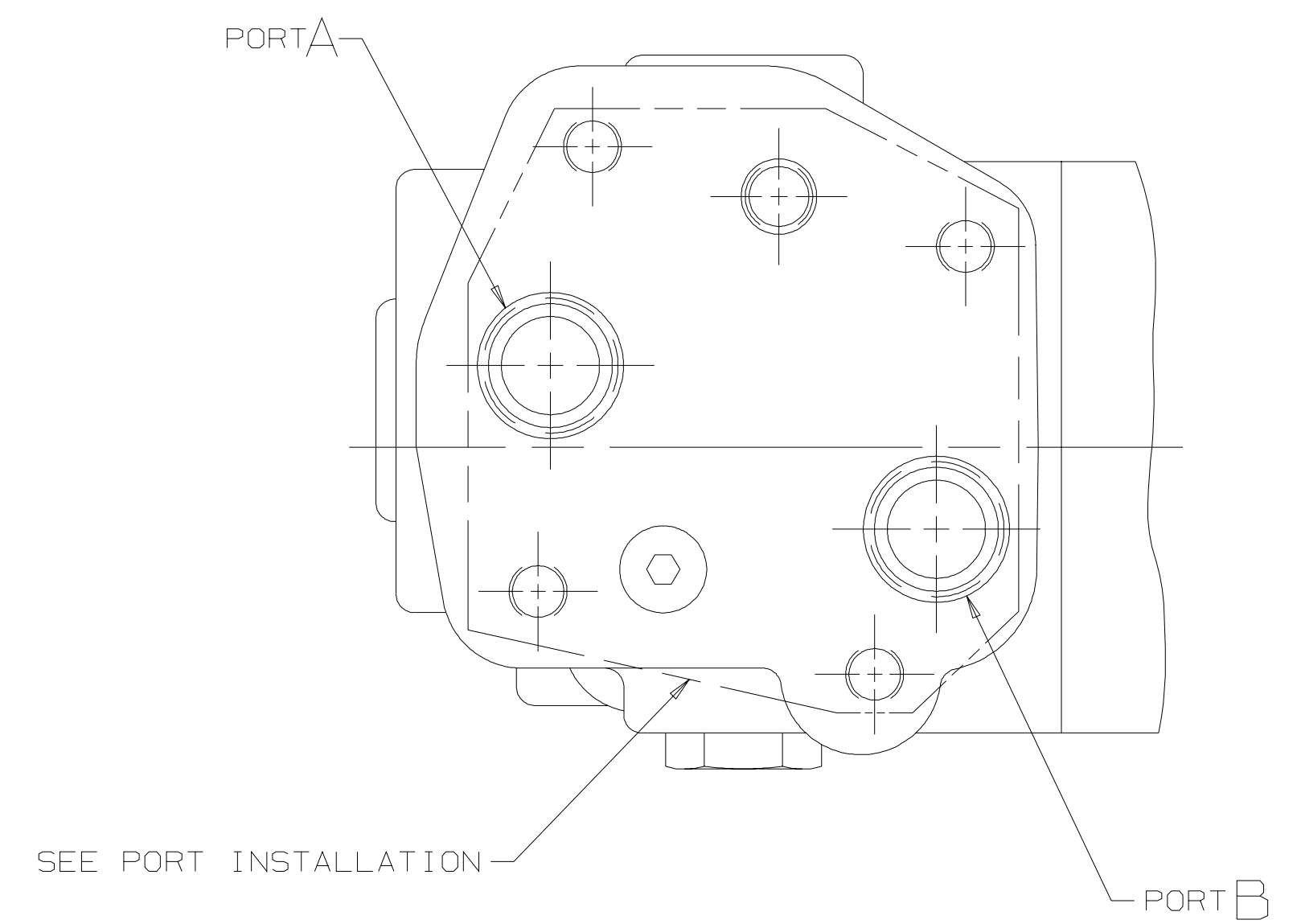


SYM	REVISION	BY	DATE	ECN
A	ENGINEERING RELEASE	RAF	11/23/93	24603
B	(2C) WAS 131.1 [5.16] MAX	HRK	11/11/08	ECR 13495
C	REVISED FOR ASSY STACK-UP	SKS	01/20/10	M78154
D	(6C) 6.3 [.25] MAX WAS 3.4 [.14] MAX	HRK	08/20/10	26463



NOTE

1 ROTATION:  
 STANDARD: WHEN FACING SHAFT END OF MOTOR, SHAFT TO ROTATE;  
 CLOCKWISE WHEN PORT "A" IS PRESSURIZED  
 COUNTERCLOCKWISE WHEN PORT "B" IS PRESSURIZED

REVERSE: WHEN FACING SHAFT END OF MOTOR, SHAFT TO ROTATE;  
 CLOCKWISE WHEN PORT "B" IS PRESSURIZED  
 COUNTERCLOCKWISE WHEN PORT "A" IS PRESSURIZED

2 MOUNTING TYPE: AC  
 STANDARD, 2 BOLT: Ø 82.6 [3.25] PILOT  
 Ø 13.59 [.535] HOLES ON Ø 106.4 [4.19]  
 BOLT CIRCLE "SAE A"

**CS** REVIEWED FOR CLASSIFICATION PER ESP-042

UNLESS OTHERWISE SPECIFIED ALL DIMENSIONS ARE IN MILLIMETERS (INCHES)

INCHES  MILLIMETERS

TOLERANCES

.XX ± REF	DRAIN BY/DATE RAF 8/10/93	MATERIAL/HEAT TREAT
.XXX ± ONLY	CHECKED BY/DATE AGJ 2-14-94	
UNSPECIFIED RADII ARE	ENGRD BY/DATE MLB 2-16-94	TITLE 2000 SERIES - TWO SPEED MOTOR INSTALLATION
UNSPECIFIED DRAFT ANGLES ARE	METALLURGY BY/DATE	NUMBER A-665-011
D SIZE	THIRD ANGLE PROJECTION	SCALE 1/1 SHEET 1 OF 1

DRAWING BASED ON ANSI Y14.5M-1982

EATON CORPORATION - CONFIDENTIAL AND PROPRIETARY NOTICE TO PERSONS RECEIVING THIS DRAWING AND / OR TECHNICAL INFORMATION

THIS DOCUMENT, INCLUDING THE DRAWING AND INFORMATION CONTAINED THEREON, IS CONFIDENTIAL AND IS THE PROPERTY OF EATON CORPORATION AND IS TO BE KEPT IN CONFIDENCE AND NOT TO BE REPRODUCED OR TRANSMITTED IN ANY FORM OR BY ANY MEANS, ELECTRONIC OR MECHANICAL, INCLUDING PHOTOCOPYING, RECORDING, OR BY ANY INFORMATION STORAGE AND RETRIEVAL SYSTEM, WITHOUT THE WRITTEN PERMISSION OF EATON. IN THE CASE OF CONFLICTING LEGAL REGULATIONS, THIS NOTICE SHALL GOVERN THE STATUS OF THIS DOCUMENT. COPYRIGHT 2000 EATON CORPORATION - ALL RIGHTS RESERVED.

**EATON**  
 Powering Business Worldwide  
 Eaton Hydraulics Inc.  
 14515 Lone Oak Road  
 Eden Prairie, MN 55344  
 USA