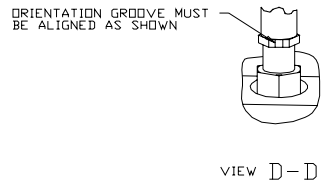
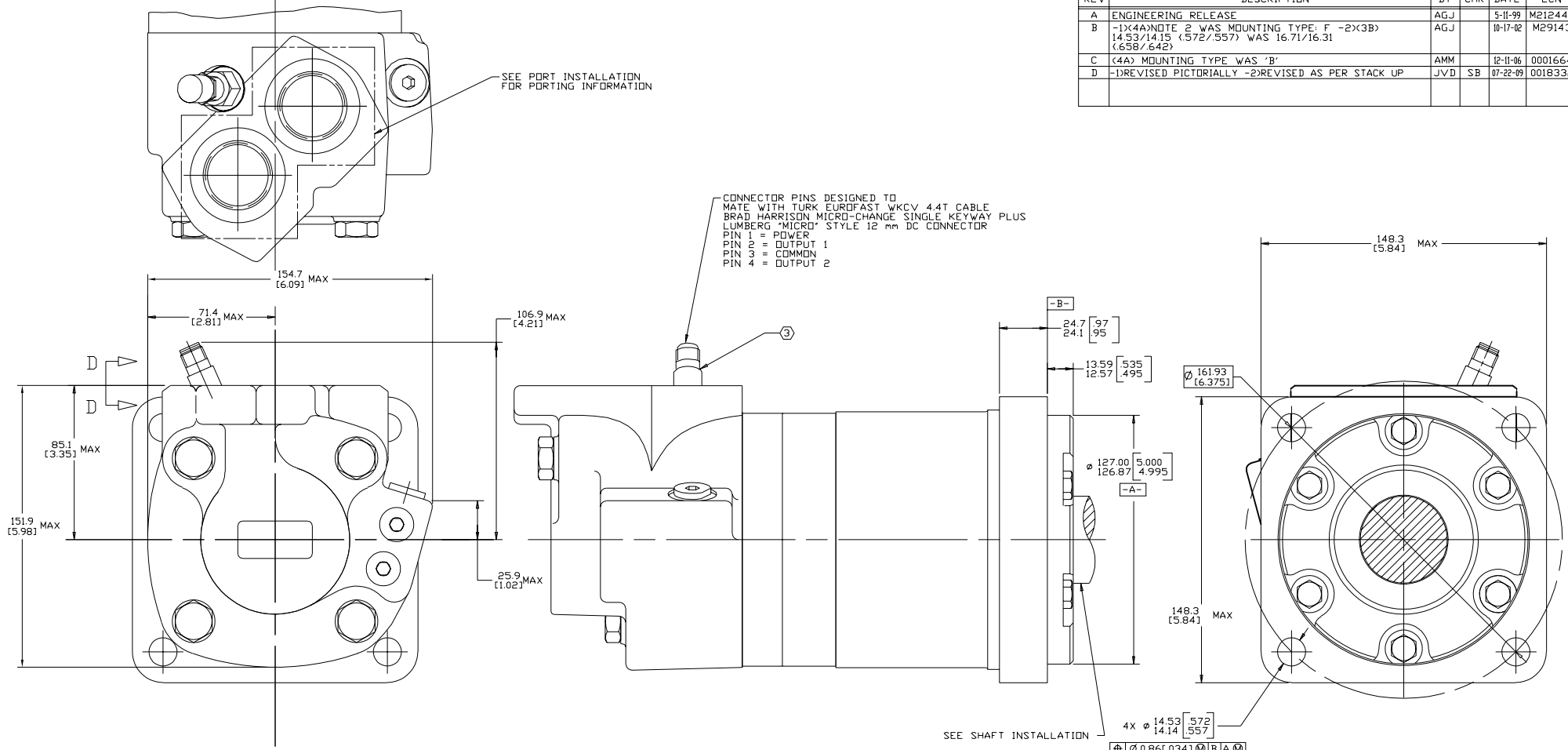


REV	DESCRIPTION	BY	CHK	DATE	ECN
A	ENGINEERING RELEASE	AGJ		5-11-99	M21244B
B	-1X(4)NOTE 2 WAS MOUNTING TYPE: F -2X(3B) 14.53/14.15 (572/557) WAS 16.71/16.31 (.658/642)	AGJ		10-17-02	M29143
C	(4A) MOUNTING TYPE WAS 'B'	AMM		12-11-06	0001664
D	-1REVISIED PICTORIALLY -2REVISIED AS PER STACK UP	JVD	SB	07-22-09	0018332



- NOTE
- 1 ROTATION
 STANDARD; WHEN FACING SHAFT END OF MOTOR, SHAFT TO ROTATE: CLOCKWISE WHEN PORT "A" IS PRESSURIZED COUNTERCLOCKWISE WHEN PORT "B" IS PRESSURIZED
 REVERSE; WHEN FACING SHAFT END OF MOTOR, SHAFT TO ROTATE: CLOCKWISE WHEN PORT "B" IS PRESSURIZED COUNTERCLOCKWISE WHEN PORT "A" IS PRESSURIZED
 - 2 MOUNTING TYPE: AB
 STANDARD. (SAE CC), 4 BOLT: ϕ 127.0 [5.000] PILOT ϕ 14.35 [5.65] HOLES ON ϕ 162.0 [6.38] BOLT CIRCLE
 - 3 NOMINAL SENSOR OUTPUT WILL BE TWO 40 ELECTRICAL PULSED SIGNALS IN QUADRATURE PER SHAFT REVOLUTION
 SUPPLY VOLTAGE: 8 TO 28 Vdc
 OUTPUT VOLTAGE: LOW .5 Vdc AT 10 mA; HIGH Vs-1 Vdc

CS REVIEWED FOR CLASSIFICATION OF CHARACTERISTICS PER ESP-042

DRAWING BASED ON ANSI Y14.5M-1982

UNLESS OTHERWISE SPECIFIED DIMENSIONS ARE IN INCHES MILLIMETERS

TOLERANCES
 X .X ---
 XX + REF
 XXX + DNL Y
 Z ---

UNSPECIFIED RADI ARE ---
 METALLURGY BY DATE

UNSPECIFIED DRAFT ANGLES ARE ---
 THIRD ANGLE PROJECTION
 DRAWING FORMAT CASE MANUAL

REPRODUCTION, DISTRIBUTION AND UTILIZATION OF THIS DOCUMENT AS WELL AS THE COMMUNICATION OF ITS CONTENTS TO OTHERS WITHOUT EXPRESS AUTHORIZATION BY PROHIBITED OFFENDERS WILL BE HELD LIABLE FOR THE PAYMENT OF DAMAGES. ALL RIGHTS RESERVED IN THE EVENT OF A PATENT, UTILITY MODEL, OR DESIGN. (PER ISO 10076)

DRAWN BY DATE: AGJ 5-12-99
 CHECKED BY DATE: GCB 5-12-99

TITLE: 6000 SERIES MOTOR INSTALL

NUMBER: A-1374-001

SCALE: 1/1 SHEET 1 OF 1

Danfoss