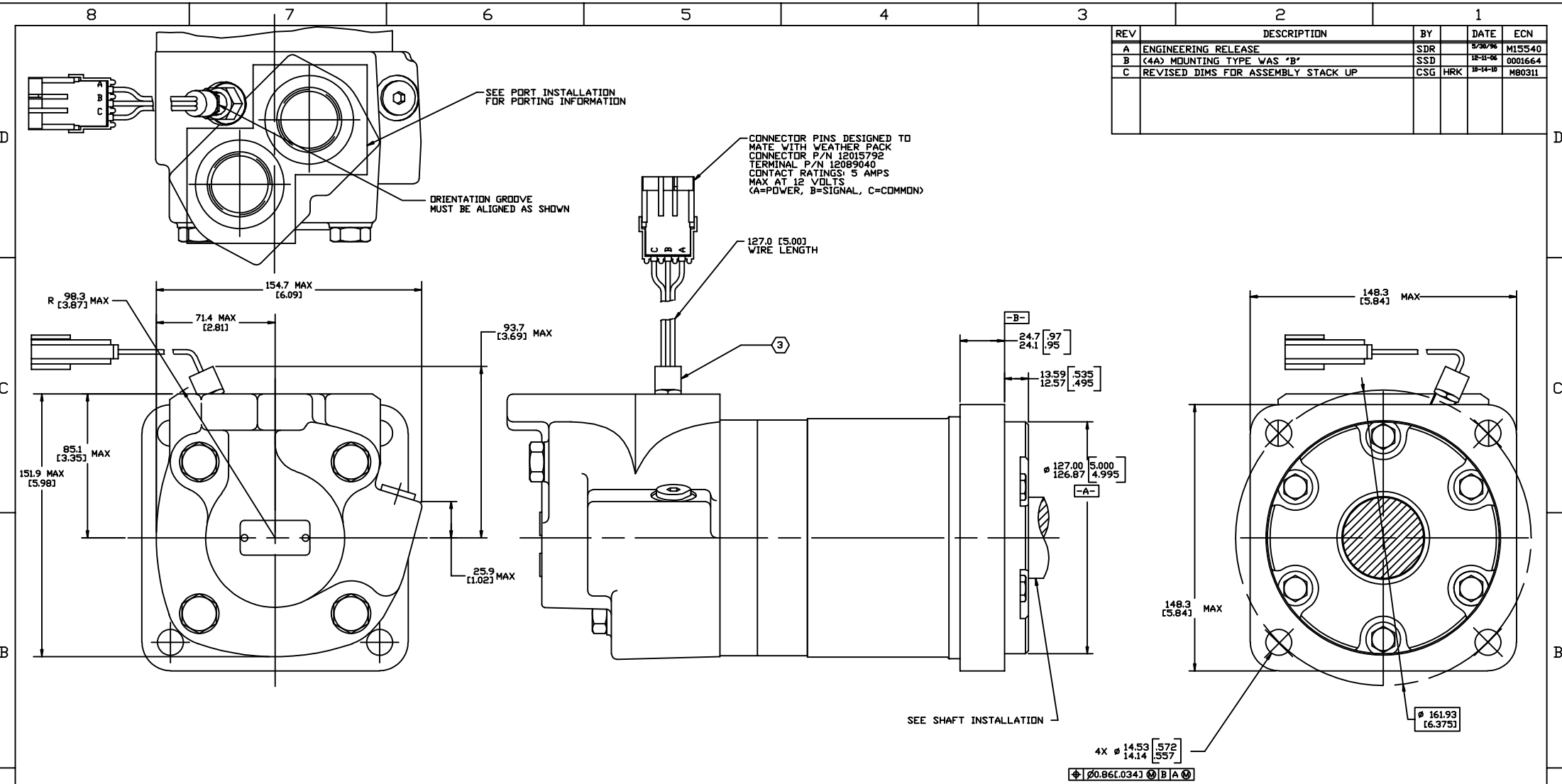


REV	DESCRIPTION	BY	DATE	ECN
A	ENGINEERING RELEASE	SDR	5/30/96	M15540
B	(4A) MOUNTING TYPE WAS "B"	SSD	12-11-06	0001664
C	REVISED DIMS FOR ASSEMBLY STACK UP	CSG	10-14-10	M60311



**NOTE**

1 ROTATION  
 STANDARD; WHEN FACING SHAFT END OF MOTOR, SHAFT TO ROTATE: CLOCKWISE WHEN PORT "A" IS PRESSURIZED COUNTERCLOCKWISE WHEN PORT "B" IS PRESSURIZED  
 REVERSE; WHEN FACING SHAFT END OF MOTOR, SHAFT TO ROTATE: COUNTERCLOCKWISE WHEN PORT "B" IS PRESSURIZED CLOCKWISE WHEN PORT "A" IS PRESSURIZED

2 MOUNTING TYPE: AB  
 STANDARD, (SAE CC), 4 BOLT;  $\phi$ 127.0 [5.00] PILOT  $\phi$ 14.35 [0.565] HOLES ON  $\phi$ 162.0 [6.38] BOLT CIRCLE

3 NOMINAL SENSOR OUTPUT WILL BE 30 ELECTRICAL PULSES PER SHAFT REVOLUTION  
 SUPPLY VOLTAGE: 8 TO 28 Vdc  
 OUTPUT VOLTAGE: LOW .5 Vdc AT 10 mA; HIGH Vs-1 Vdc

REVIEWED FOR CLASSIFICATION PER ESP-042

DRAWING BASED ON ANSI Y14.5M-1982

UNLESS OTHERWISE SPECIFIED DIMENSIONS ARE IN INCHES  
 DECIMALS  THIRDS  SIXTEENTHS

TOLERANCES

XX & REF	UNLESS OTHERWISE SPECIFIED DIMENSIONS ARE IN INCHES	MATERIAL HEAT TREAT
XXX & ENL Y	UNLESS OTHERWISE SPECIFIED DIMENSIONS ARE IN INCHES	
UNSPECIFIED HOLE ARE	UNLESS OTHERWISE SPECIFIED DIMENSIONS ARE IN INCHES	
UNSPECIFIED DRIFT HOLES ARE	UNLESS OTHERWISE SPECIFIED DIMENSIONS ARE IN INCHES	
D SIZE	DO NOT SCALE	

DATE: SIR 8/12/96  
 TITLE: 6000 SERIES MOTOR INSTALLATION  
 PART NUMBER: A-1013-007  
 SCALE: 1/1  
 SHEET: 1 OF 1

THE REPRODUCTION, DISTRIBUTION, AND UTILIZATION OF THIS DOCUMENT AS WELL AS THE COMMUNICATION OF ITS CONTENTS TO OTHERS WITHOUT EXPLICIT AUTHORIZATION IS PROHIBITED. OFFENDERS WILL BE HELD LIABLE FOR THE PAYMENT OF DAMAGES. ALL RIGHTS RESERVED IN THE EVENT OF THE GRANT OF A PATENT, UTILITY MODEL, OR DESIGN. (PER ISO 9016)

Danfors