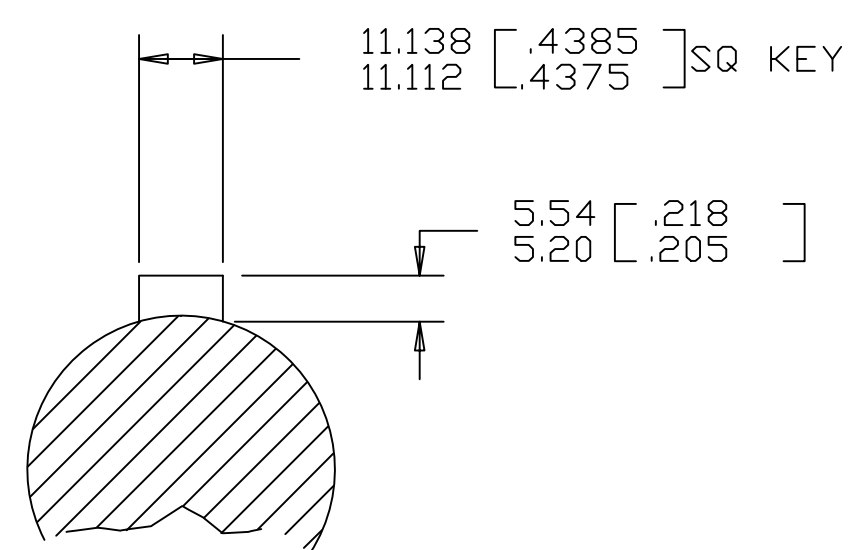
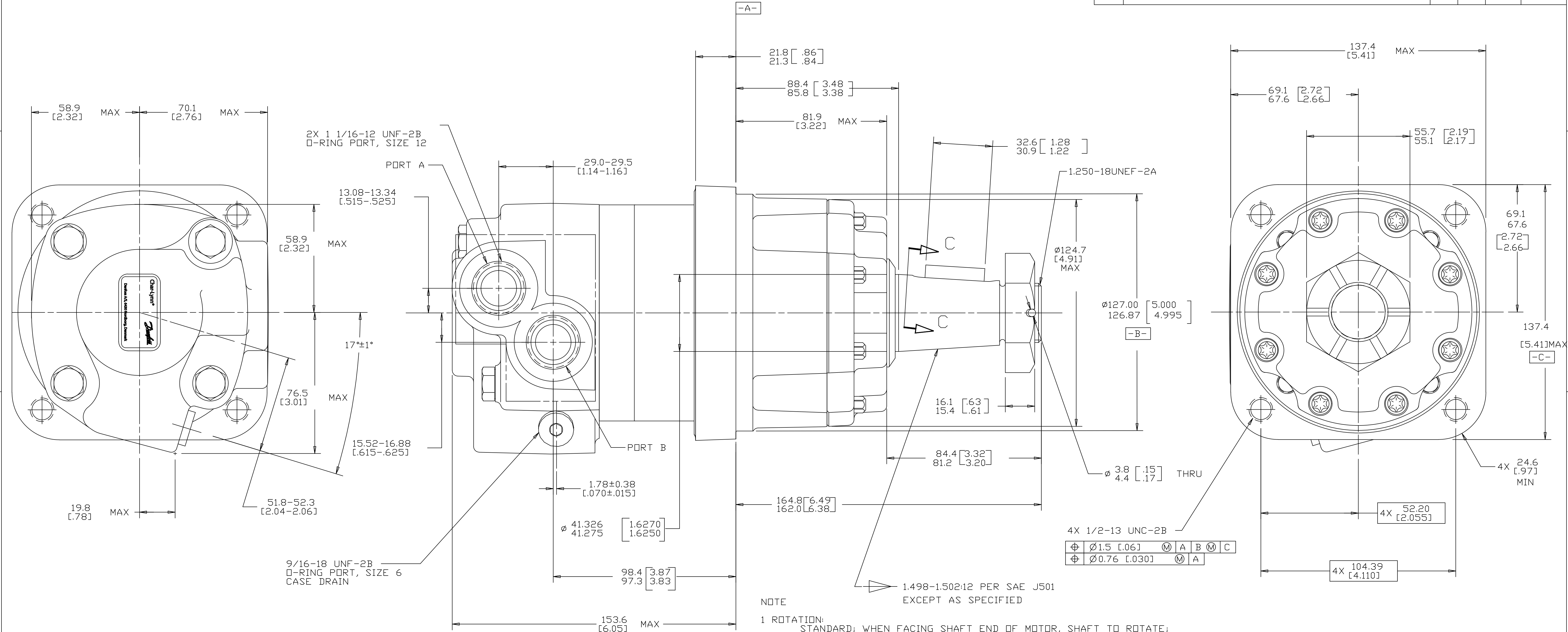


REV	DESCRIPTION	BY	CHK	DATE	ECN
A	ENGINEERING RELEASE	VVB		6-19-06	M65540A
B	-1>(SA)DISP WAS "15" -2>MOUNTING TYPE WAS "D" -3>PORT TYPE WAS "G" -4>ADDED CASE FLOW OPTION	AMM		1-24-07	0002527



NOTE  
 1 ROTATION: STANDARD; WHEN FACING SHAFT END OF MOTOR, SHAFT TO ROTATE; CLOCKWISE WHEN PORT "A" IS PRESSURIZED COUNTERCLOCKWISE WHEN PORT "B" IS PRESSURIZED

REVERSE; WHEN FACING SHAFT END OF MOTOR, SHAFT TO ROTATE; CLOCKWISE WHEN PORT "B" IS PRESSURIZED. COUNTERCLOCKWISE WHEN PORT "A" IS PRESSURIZED

- 2 DISPLACEMENT: 150 246.3 cm<sup>3</sup>/r [15.03 in<sup>3</sup>/r]
- 3 MOUNTING TYPE: AD WHEEL, 4 BOLT; 127.00 [5.000] PILOT DIA. .500-13 UNC-2B THREADED HOLES ON 147.62 [5.812] DIA. BOLT CIRCLE
- 4 OUTPUT SHAFT: 02 Ø 41.28 [1.625] TAPERED WITH 11.112 [.4375] SQ X 31.75 [1.250] STRAIGHT KEY, 1 1/4-18UNEF-2A THREAD WITH SLOTTED HEX NUT
- 5 PORTS: AB 1.0625-12 UN-2B SAE O-RING PORTS - STAGGERED PORTS
- 6 CASE FLOW: 01 .5625-18 UNF-2B SAE O-RING PORT WITH SHUTTLE VALVE

UNLESS OTHERWISE SPECIFIED ALL DIMENSIONS ARE IN INCHES		DRAWING BASED ON ANSI Y14.5M-1982	
<input type="checkbox"/> MILLIMETERS (INCHES)	<input type="checkbox"/>	THE REPRODUCTION, DISTRIBUTION AND UTILIZATION OF THIS DOCUMENT AS WELL AS THE COMMUNICATION OF ITS CONTENTS TO OTHER WITHOUT EXPLICIT AUTHORIZATION IS PROHIBITED. OFFENDERS WILL BE HELD LIABLE FOR THE PAYMENT OF DAMAGES. ALL RIGHT RESERVED IN THE EVENT OF THE GRANT OF A PATENT, UTILITY MODEL OR DESIGN. (PER ISO 16016)	
TOLERANCES		DRAWN BY/DATE VVB 6-26-06	MATERIAL/HEAT TREAT
xx ± REF		CHECKED AAK 6-26-06	
xxx ± ONLY		ENGRG BY/DATE JML 6-26-06	TITLE
±		METALLURGY BY/DATE	4000 SERIES MOTOR INSTALLATION
UNSPECIFIED RADII ARE		UNSPECIFIED DRAFT ANGLES ARE	
THIRD ANGLE PROJECTION		MICROINCHES (MICROMETERS)	NUMBER
DRAWING FORMAT CADD <input type="checkbox"/> MANUAL <input type="checkbox"/>	DO NOT SCALE	ARITHMETICAL AVERAGE	110-1220-006
		SCALE 1/1	SHEET 1 OF 1