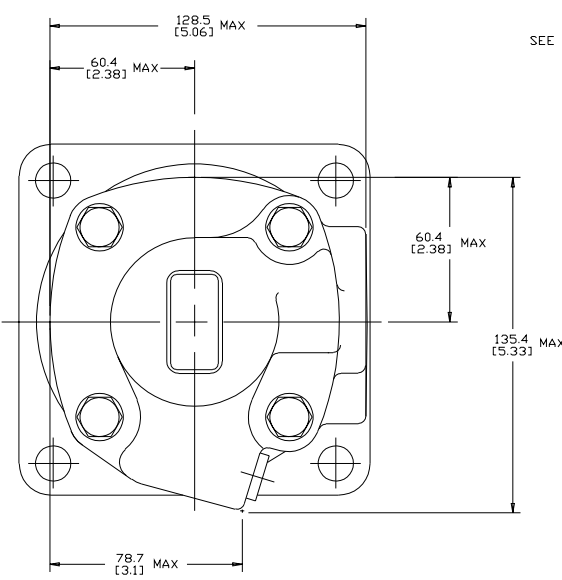


SYM	REVISION	BY	DATE	ECN
A	RELEASE FOR SAMPLES AND ESTIMATE	GA	1-29-91	X5116
H	(5)REVISED PICTORIALY	VVB	8-16-06	M66511
J	(7)MOUNTING TYPE WAS "H"	AMM	1-24-07	0002527
K	REVISED FOR DETAILS OF CHANGES REFER ECR ATTACHMENT	PRK	9-21-09	M76013
L	ADDED NOTE (3)	SMT	11-19-12	M87527



SEE PORT INSTALLATION

PORT A

PORT B

18.3 [.72]
17.8 [.70]

A

31.2 [1.23] MAX

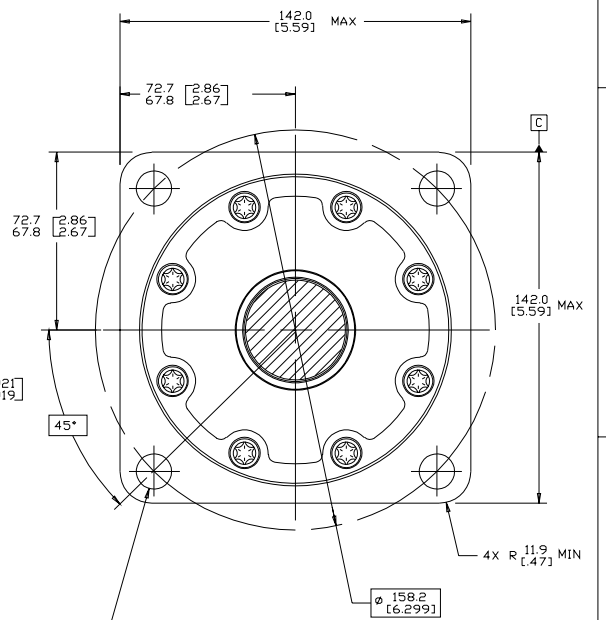
9.7 [.38]
8.6 [.34]

ϕ 124.99 [4.921]
124.94 [4.919]

SEE SHAFT INSTALLATION

4X ϕ 14.50 [.571]
14.10 [.555]

ϕ 0.76 [.030] (3) A B (3)



NOTE

1 ROTATION:
STANDARD; WHEN FACING SHAFT END OF MOTOR, SHAFT TO ROTATE;
CLOCKWISE WHEN PORT "A" IS PRESSURIZED
COUNTERCLOCKWISE WHEN PORT "B" IS PRESSURIZED

REVERSE; WHEN FACING SHAFT END OF MOTOR, SHAFT TO ROTATE;
CLOCKWISE WHEN PORT "B" IS PRESSURIZED
COUNTERCLOCKWISE WHEN PORT "A" IS PRESSURIZED

2. MOUNTING TYPE: AH
STANDARD: ISO FLANGE 125 B4HW (ISO 3019/2)
124.97 [4.920] PILDT DIA. 14.27 [.562]
DIA. HOLES ON 160.00 [6.299] DIA. BOLT CIRCLE

(3) APPLICABLE IF INDICATED ON PART LIST

REVIEWED FOR CLASSIFICATION PER ESP-042

UNLESS OTHERWISE SPECIFIED ALL DIMENSIONS ARE IN: INCHES MILLIMETERS

DRAWING BASED ON ASME Y14.5M-1994

TOLERANCES: X --- INCHES, XX + REF, XXX + ONLY

UNSPECIFIED RADI ARE: --- INCHES, --- MILLIMETERS

UNSPECIFIED DRAFT ANGLES ARE: --- DEGREES

DRAWING FORMAT: CASE MANUAL

THE REPRODUCTION, DISTRIBUTION AND UTILIZATION OF THIS DOCUMENT AS WELL AS THE COMMUNICATION OF ITS CONTENTS TO OTHERS WITHOUT EXPLICIT AUTHORIZATION IS PROHIBITED. OFFENDERS WILL BE HELD LIABLE FOR THE PAYMENT OF DAMAGES. ALL RIGHTS RESERVED IN THE EVENT OF A PATENT, UTILITY MODEL, OR DESIGN. (PER ISO 10076)

DRAWN BY: GA 4-12-91
CHECKED BY: KJR 7-3-91
ENGR. BY: CK 7-5-91
DATE: 11-19-12

MATERIAL/HEAT TREAT: ---
TITLE: 4000 MOTOR INSTALLATION
NUMBER: A-332-000
SCALE: 1/1
SHEET 1 OF 1

Danfoss