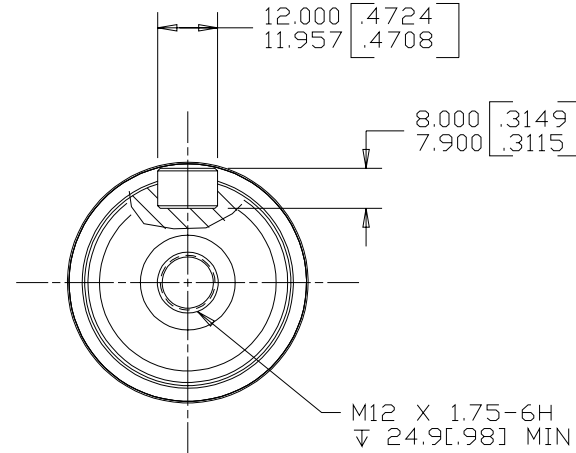
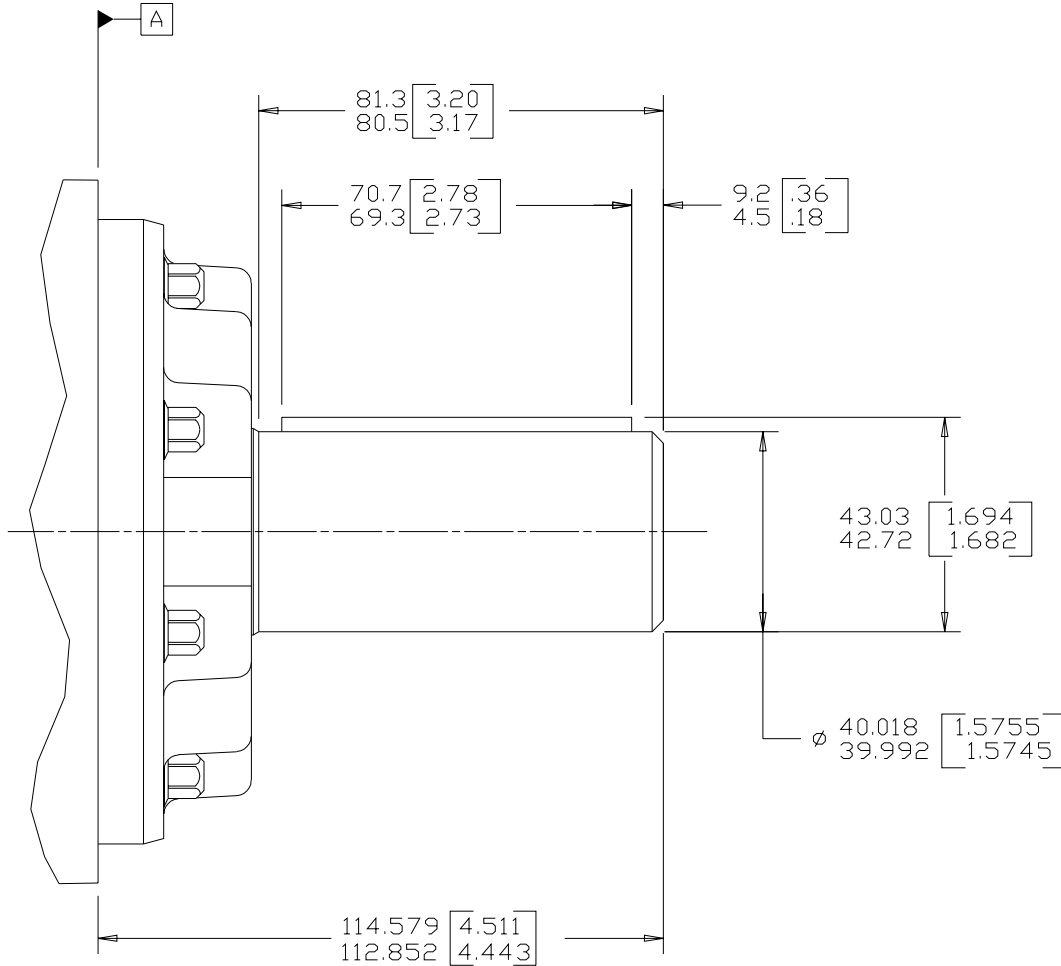


SYM	REVISION	BY	DATE	ECN
A	RELEASE FOR SAMPLES AND ESTIMATE	G.A	1-29-91 KJR	X5116
B	ENGINEERING RELEASE	MLW	6-27-91 KR	20710
C	REMOVED 30.8 [1.21] MAX AND PICTORIAL CHANGE TO FRONT RETAINER	LMD	12-13-91 LMD	21445
D	REVISED	SDR		22331
E	-1) MOUNTING TYPE WAS "H" -2) OUTPUT SHAFT WAS "14"	AMM	1-24-07	0002527
F	-1) WAS 111.70-114.50[4.390-4.510]	PRK	5-21-09	M76013
G	-1) REVISED AS PER STACK UP-2) UPDATED TO ASME Y14.5-2009 STANDARD	NRI	8-06-14	0058100



REVIEWED FOR CLASSIFICATION PER ESP-042

NOTE

- MOUNTING TYPE: OPTION AH
- OUTPUT SHAFT: OPTION 11

UNLESS OTHERWISE SPECIFIED ALL DIMENSIONS ARE IN		DRAWING BASED ON ASME Y14.5-2009	
INCHES <input type="checkbox"/>	MILLIMETERS <input checked="" type="checkbox"/>	THE REPRODUCTION, DISTRIBUTION, AND UTILIZATION OF THIS DOCUMENT, AS WELL AS THE COMMUNICATION OF ITS CONTENTS TO OTHERS WITHOUT EXPLICIT AUTHORIZATION IS PROHIBITED. OFFENDERS WILL BE HELD LIABLE FOR THE PAYMENT OF DAMAGES. ALL RIGHTS RESERVED IN THE EVENT OF THE GRANT OF A PATENT, UTILITY MODEL, OR DESIGN. (PER ISO 16016)	
TOLERANCES		MATERIAL/HEAT TREAT	
x ±	----	DRAWN BY/DATE G.A 4-17-91	
xx ±	REF	CHECKED BY/DATE KJR 7-9-91	
xxx ±	ONLY	ENGRG BY/DATE GK 7-9-91	TITLE
∠	----	METALLURGY BY/DATE	4000 SERIES MOTOR SHAFT INSTALLATION
UNSPECIFIED RADII ARE		MICROINCHES <input type="checkbox"/>	NUMBER
UNSPECIFIED DRAFT ANGLES ARE		MILLIMETERS <input checked="" type="checkbox"/>	A-333-010
DRAWING FORMAT CADD <input checked="" type="checkbox"/> MANUAL <input type="checkbox"/>	THIRD ANGLE PROJECTION	ARITHMETICAL AVERAGE <input checked="" type="checkbox"/>	SCALE 1/1 SHEET 1 OF 1

