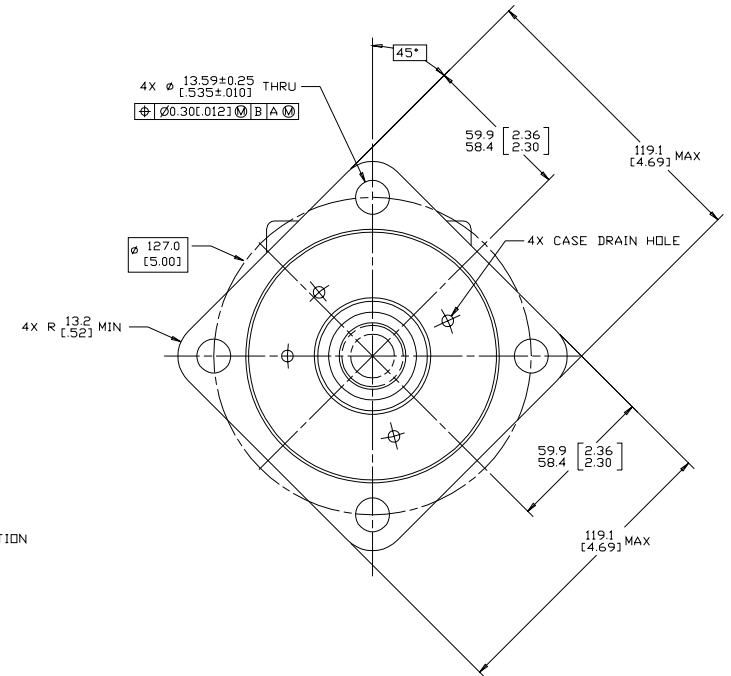
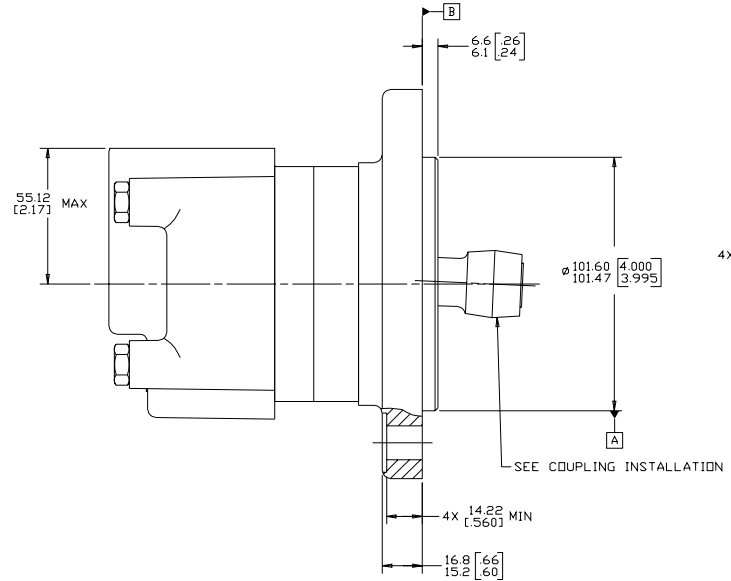
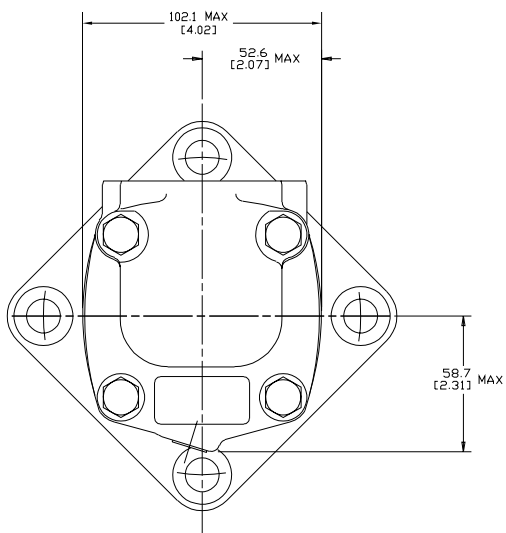
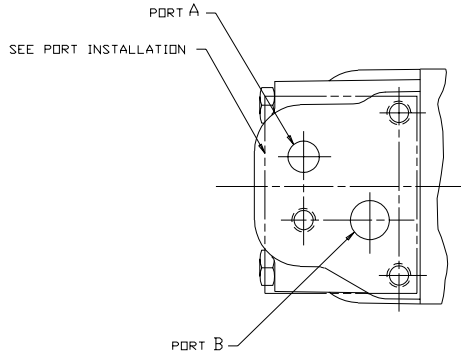


SYM	REVISION	BY	DATE	ECN
A	ENGINEERING RELEASE	AGJ	5-26-93	22833
B	(4)NOTE 2 WAS MOUNTING TYPE: D AND E	AGJ	5/13/98	41044
C	REVISED PICTORIALY	AGJ	11-14-03	45640
D	-1)REVISED AS PER STACK-UP -2)UPDATED TO ASME Y14.5-2009 STANDARD	NRI	10-06-14	M94234
E	-1(7C) 102.1 [4.02] MAX WAS 94.7 [3.73] MAX -2(7C) 52.6 [2.07] MAX WAS 50.3 [1.98] MAX -3(6B)REMOVED 113.0 [4.45] MAX -4(6B) 55.12 [2.17] MAX WAS 59.5 [2.34] MAX	YUP	04-12-15	0063316



NOTE

1 ROTATION:
 STANDARD: WHEN FACING SHAFT END OF MOTOR, SHAFT TO ROTATE;
 CLOCKWISE WHEN PORT "A" IS PRESSURIZED
 COUNTERCLOCKWISE WHEN PORT "B" IS PRESSURIZED
 REVERSE: WHEN FACING SHAFT END OF MOTOR, SHAFT TO ROTATE;
 CLOCKWISE WHEN PORT "B" IS PRESSURIZED
 COUNTERCLOCKWISE WHEN PORT "A" IS PRESSURIZED

2 MOUNTING TYPE: AD AND AE
 BEARINGLESS, 4 BOLT: ϕ 101.6 [4.00] PILOT
 ϕ 13.59 [0.535] HOLES ON ϕ 127.0 [5.00] BOLT CIRCLE

REVIEWED FOR CLASSIFICATION PER ESP -042

UNLESS OTHERWISE SPECIFIED ALL DIMENSIONS ARE IN		DRAWING BASED ON ASME Y14.5-2009	
INCHES	<input type="checkbox"/>	THE REPRODUCTION, DISTRIBUTION AND UTILIZATION OF THIS DOCUMENT AS WELL AS THE COMMUNICATION OF ITS CONTENTS TO OTHERS WITHOUT EXPRESS AUTHORIZATION IS PROHIBITED. OFFENDERS WILL BE HELD LIABLE FOR THE PAYMENT OF DAMAGES. ALL RIGHTS RESERVED IN THE EVENT OF A PATENT, UTILITY MODEL, OR DESIGN. (PER ISO 9000)	
MILLIMETERS	<input checked="" type="checkbox"/>		
TOLERANCES			
xx + REF	DRAWN: A. JOHNSON		
xxx + DNL Y	BY DATE: 12-2-93	MATERIAL/HEAT TREAT	
----	CHECKED: SDR 6-28-93	DATE	
UNSPECIFIED RADI	BY DATE: 6-28-93	TITLE	2000 SERIES MOTOR INSTALL
UNSPECIFIED DRAFT ANGLES	METALLURGY BY DATE	NUMBER	A-666-005
UNSPECIFIED THIRD ANGLE PROJECTION	<input checked="" type="checkbox"/>	SCALE	1/1
DO NOT SCALE	<input checked="" type="checkbox"/>	SHEET	1 OF 1