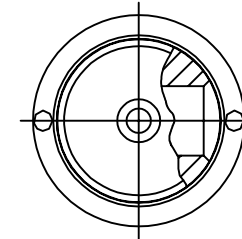
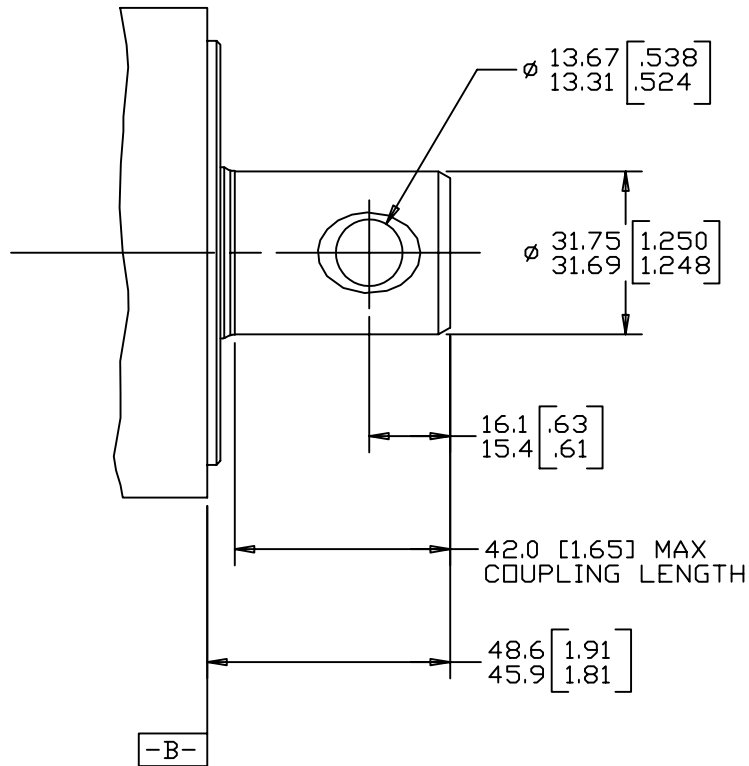


REV	DESCRIPTION	BY	DATE	ECN
A	ENGINEERING RELEASE	AAK	02/20/06	M66669
B	REVISED	AAB	07-06-10	M79504



REVIEWED FOR CLASSIFICATION PER ESP-042

UNLESS OTHERWISE SPECIFIED ALL DIMENSIONS ARE IN INCHES <input type="checkbox"/> MILLIMETERS <input checked="" type="checkbox"/> [INCHES]	DRAWING BASED ON ANSI Y14.5M-1982		
	THE REPRODUCTION, DISTRIBUTION, AND UTILIZATION OF THIS DOCUMENT, AS WELL AS THE COMMUNICATION OF ITS CONTENTS TO OTHERS WITHOUT EXPLICIT AUTHORIZATION IS PROHIBITED. OFFENDERS WILL BE HELD LIABLE FOR THE PAYMENT OF DAMAGES. ALL RIGHTS RESERVED IN THE EVENT OF THE GRANT OF A PATENT, UTILITY MODEL, OR DESIGN. (PER ISO 16016)		
TOLERANCES x ± ---- .xx ± REF .xxx ± ONLY ∠ ± ----	DRAWN BY/DATE: AAK 2/21/06 CHECKED BY/DATE: AGJ 2/21/06	MATERIAL/HEAT TREAT	
UNSPECIFIED RADII ARE ----	ENGRG BY/DATE: JML 2/22/06 METALLURGY BY/DATE: ----	TITLE: 2000 SERIES MOTOR SHAFT INSTALLATION	
UNSPECIFIED DRAFT ANGLES ARE ----	 THIRD ANGLE PROJECTION	<input type="checkbox"/> MICROINCHES <input type="checkbox"/> MICROMETERS <input checked="" type="checkbox"/> MICROINCHES	NUMBER: A-688-048
B SIZE	DO NOT SCALE	ARITHMETICAL AVERAGE <input checked="" type="checkbox"/>	SCALE 1/1 SHEET 1 OF 1

NOTE

- 1 MOUNTING TYPE: OPTION AJ
- 2 OUTPUT SHAFT: OPTION 25