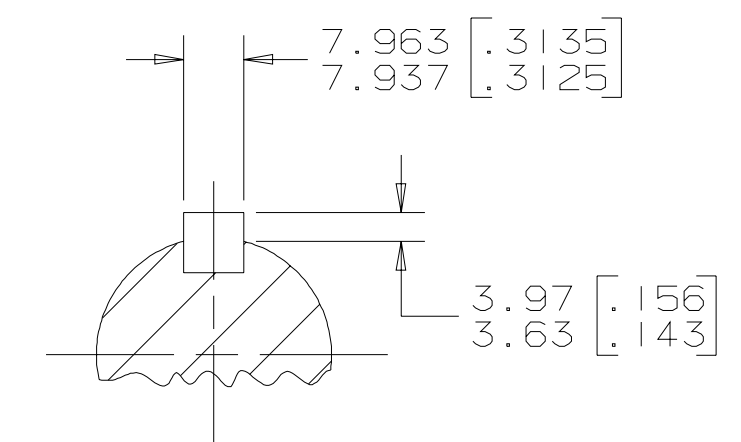
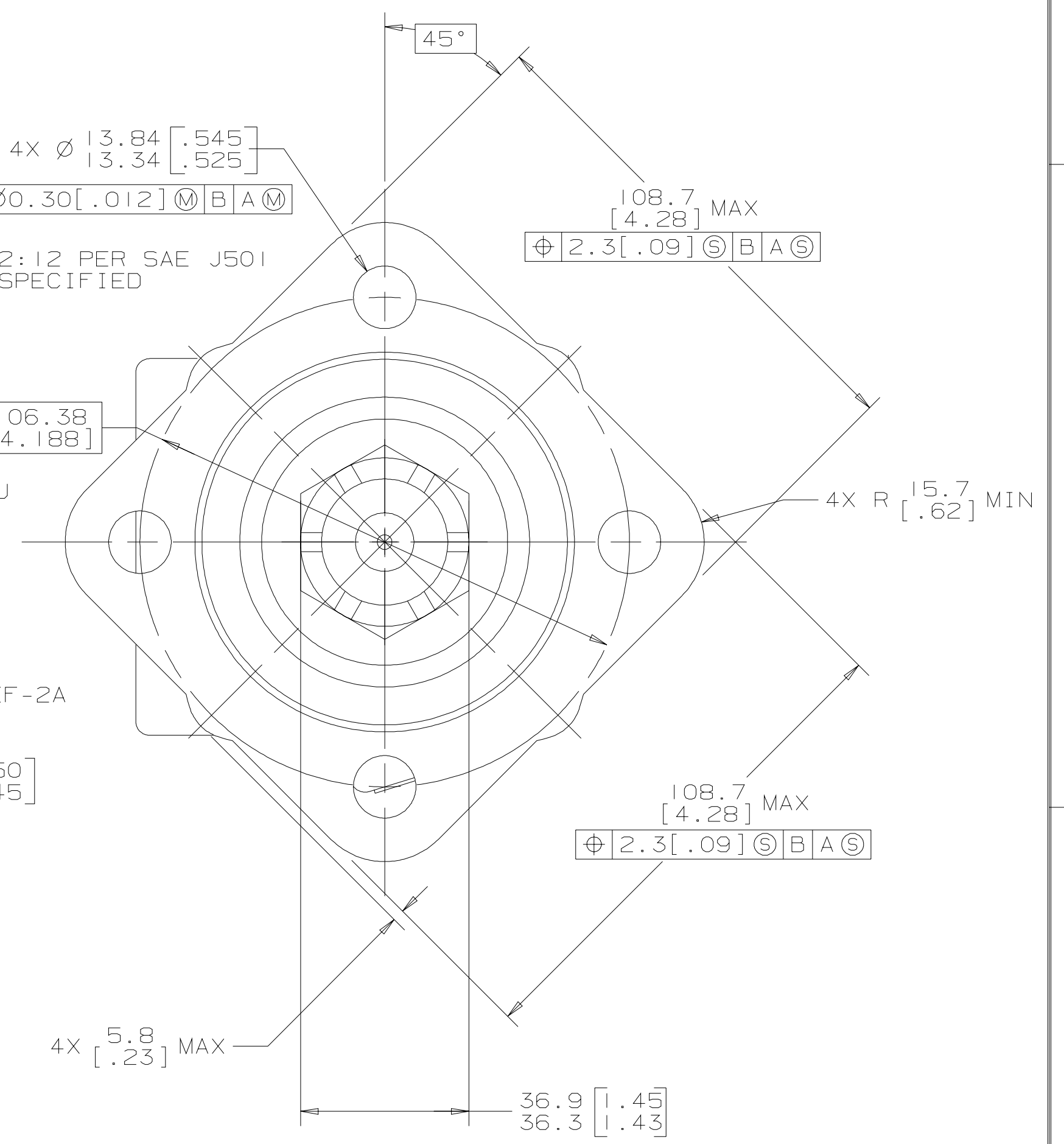
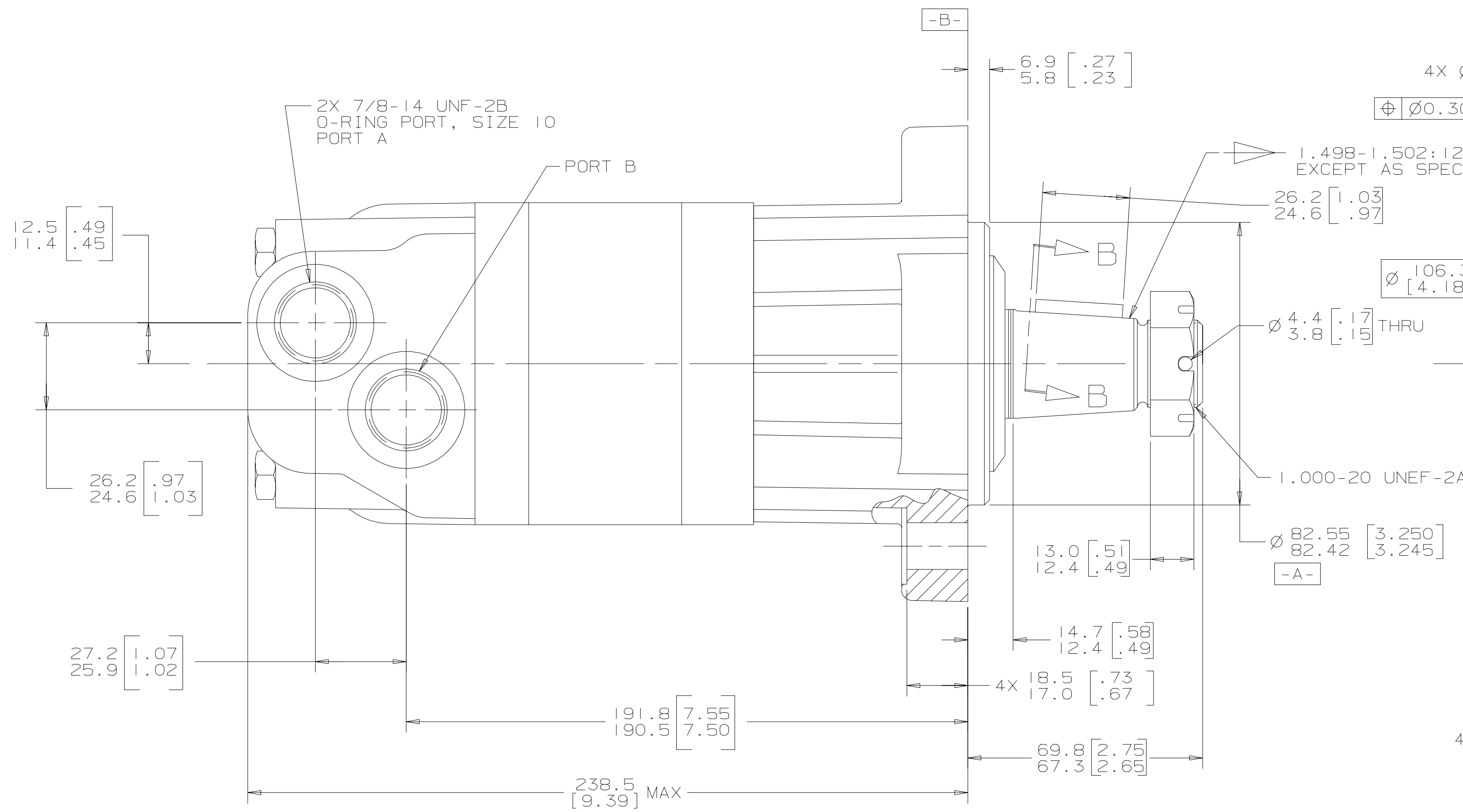
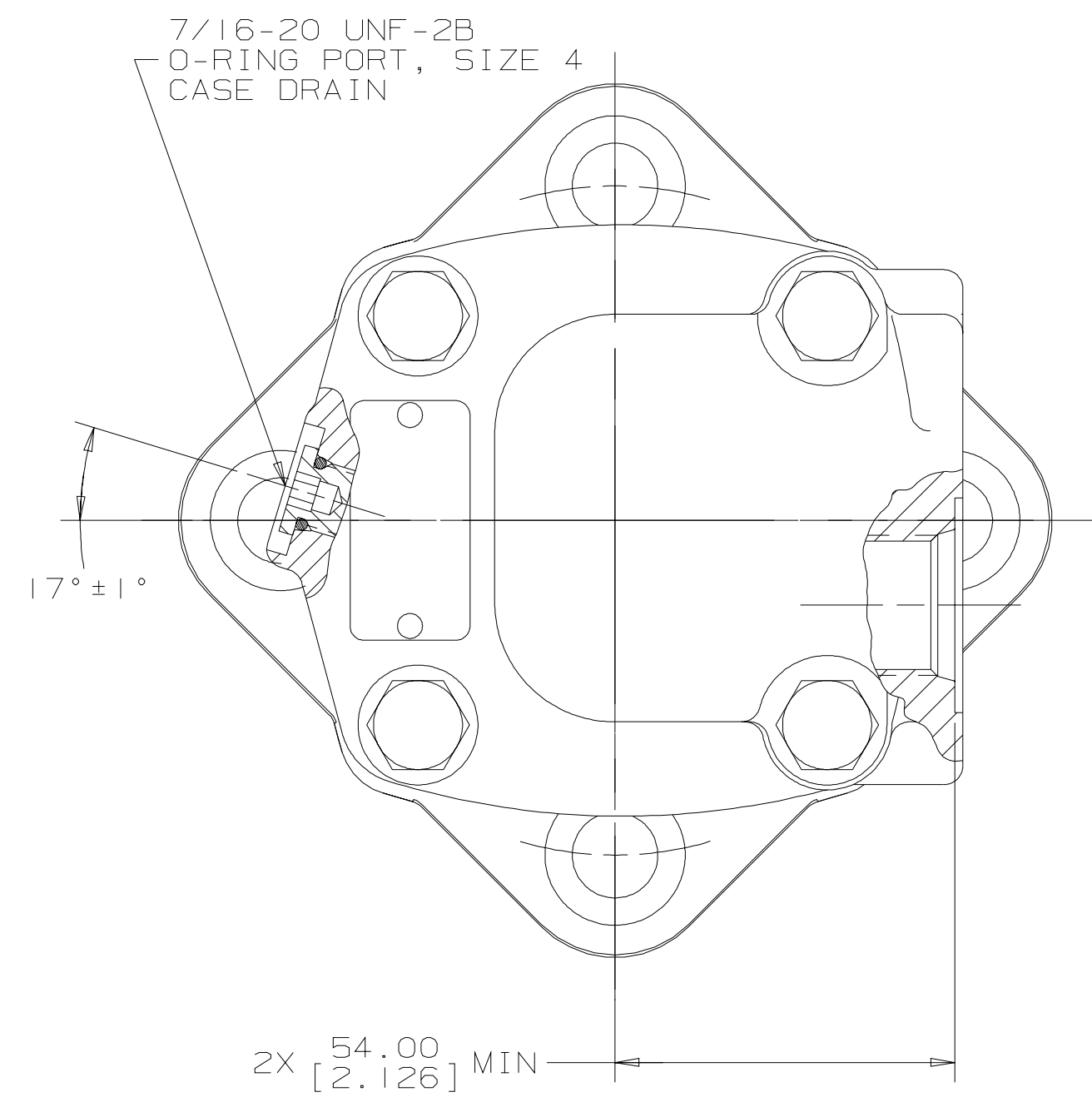


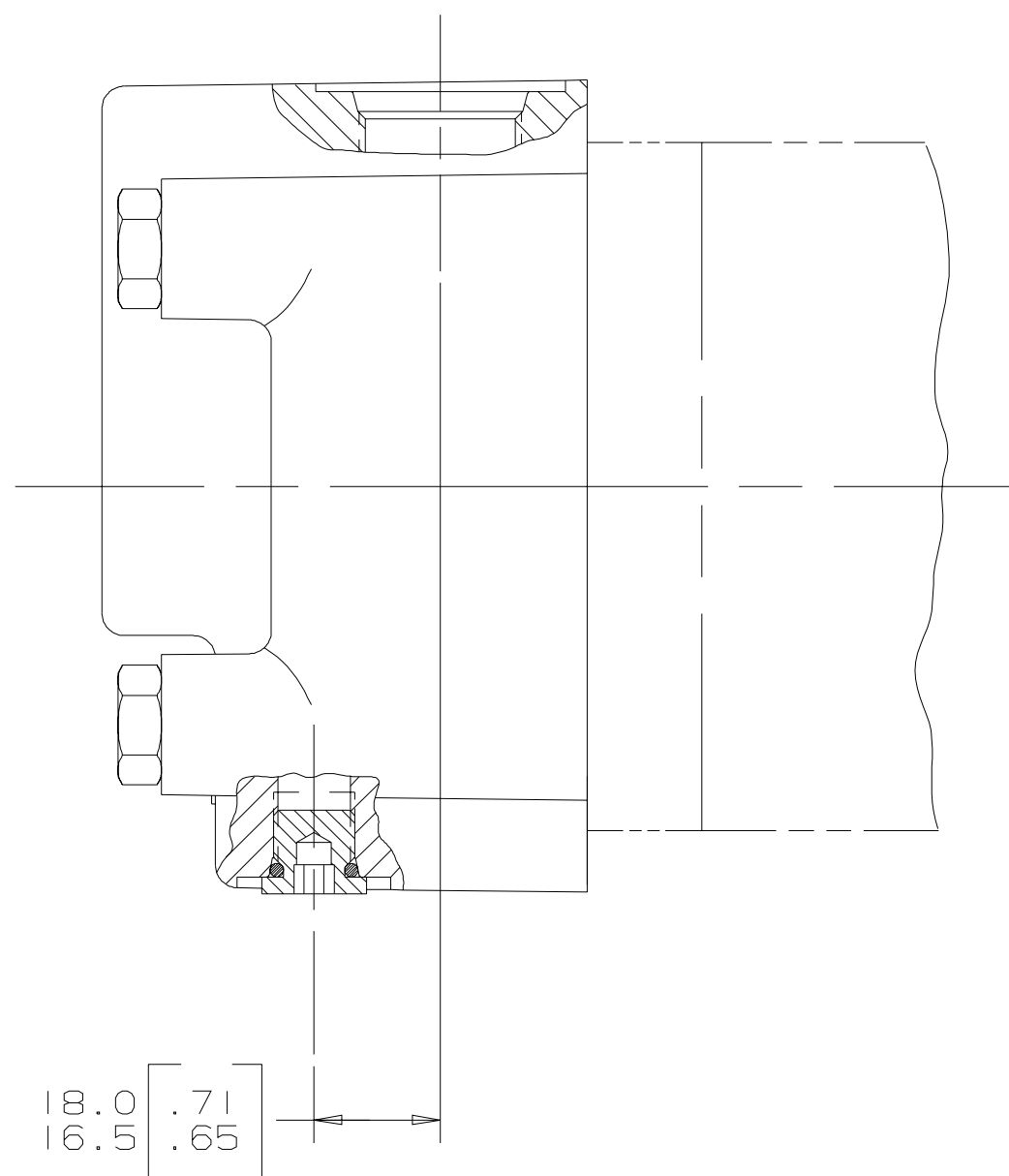
REV	DESCRIPTION	BY	CHK	DATE	ECN
A	ENGINEERING RELEASE	RAF		1-1-97	M16664
B	(8A) REVISED NOTES	AGJ		5-13-02	41044
C	(2D) 4X Ø 13.84/13.34 [.545/.525] WAS 4X Ø 13.72/13.46 [.540/.530]	AGJ		9-30-03	45504
D	(8A) NOTE 2 WAS "DISPLACEMENT: 24....."	RG		6-26-06	56090



SECTION B-B



- NOTE
- ROTATION:
STANDARD: WHEN FACING SHAFT END OF MOTOR, SHAFT TO ROTATE:
CLOCKWISE WHEN PORT "A" IS PRESSURIZED
COUNTERCLOCKWISE WHEN PORT "B" IS PRESSURIZED
 - DISPLACEMENT: 240
393.8 cm³/r [24.03 in³/r]
 - MOUNTING TYPE: AH
STANDARD: 4 BOLT: Ø 82.6 [3.25] PILOT
Ø 13.59 [.535] HOLES ON Ø 106.4 [4.19] BOLT CIRCLE
 - OUTPUT SHAFT: O3
Ø 31.75 [1.250] .125:1 TAPERED SHAFT PER SAE J501 WITH
1.000-20 UNEF-2A THREADED SHAFT END AND SLOTTED HEX NUT,
7.938 [.3125] SQ X 25.40 [1.000] STRAIGHT KEY
 - PORT TYPE: AA
7/18-14 UNF-2B SAE O-RING PORTS SIZE -10, STAGGERED PORTS
 - CASE FLOW OPTION: O1
7/16-20 UNF-2B SAE O-RING PORT SIZE -4



UNLESS OTHERWISE SPECIFIED ALL DIMENSIONS ARE IN		DRAWING BASED ON ANSI Y14.5M-1982																	
INCHES <input type="checkbox"/>	MILLIMETERS <input checked="" type="checkbox"/>	THE REPRODUCTION, DISTRIBUTION, AND UTILIZATION OF THIS DOCUMENT, AS WELL AS THE COMMUNICATION OF ITS CONTENTS TO OTHERS WITHOUT EXPlicit AUTHORIZATION IS PROHIBITED. OFFENDERS WILL BE HELD LIABLE FOR THE PAYMENT OF DAMAGES. ALL RIGHTS RESERVED IN THE EVENT OF THE GRANT OF A PATENT, UTILITY MODEL, OR DESIGN (PER ISO 16016)																	
TOLERANCES		<table border="1"> <tr> <td>DRWN BY/DATE</td> <td>RAF 1-7-97</td> <td>MATERIAL/HEAT TREAT</td> <td></td> </tr> <tr> <td>CHECKED BY/DATE</td> <td>WRD 1-10-97</td> <td>TITLE</td> <td>2000 SERIES MOTOR INSTALL</td> </tr> <tr> <td>ENGR BY/DATE</td> <td>MLB 1-10-97</td> <td>NUMBER</td> <td>104-1851-006</td> </tr> <tr> <td>METALLURGY BY/DATE</td> <td></td> <td>SCALE</td> <td>1/1</td> </tr> </table>		DRWN BY/DATE	RAF 1-7-97	MATERIAL/HEAT TREAT		CHECKED BY/DATE	WRD 1-10-97	TITLE	2000 SERIES MOTOR INSTALL	ENGR BY/DATE	MLB 1-10-97	NUMBER	104-1851-006	METALLURGY BY/DATE		SCALE	1/1
DRWN BY/DATE	RAF 1-7-97	MATERIAL/HEAT TREAT																	
CHECKED BY/DATE	WRD 1-10-97	TITLE	2000 SERIES MOTOR INSTALL																
ENGR BY/DATE	MLB 1-10-97	NUMBER	104-1851-006																
METALLURGY BY/DATE		SCALE	1/1																
.XX	----	UNSPECIFIED RADI ARE																	
.XXX	----	UNSPECIFIED DRAFT ANGLES ARE																	
<	----	THIRD ANGLE PROJECTION																	
DRAWING FORMAT CAD <input checked="" type="checkbox"/> MANUAL <input type="checkbox"/>		DO NOT SCALE	ARTHEMATICAL AVERAGE																

G S K



A