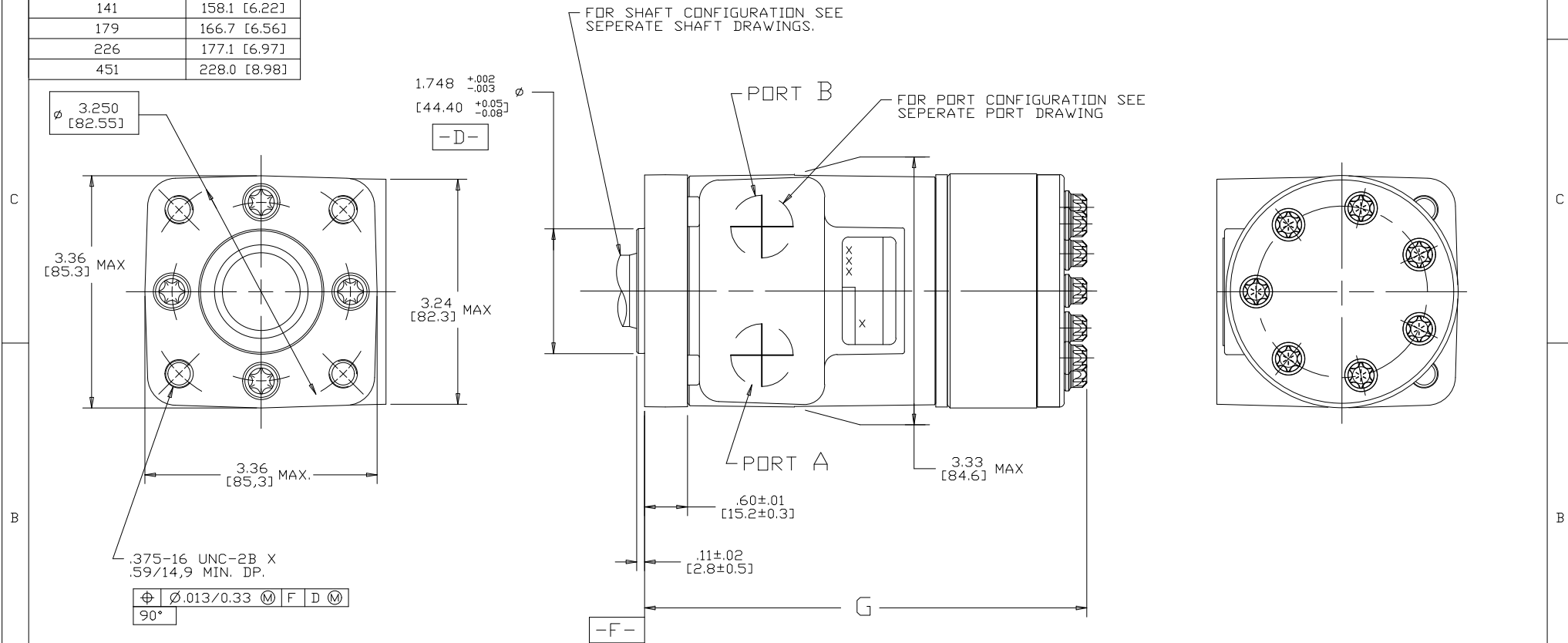


DISPLACEMENT CODE	G MAX
022	132.7 [5.22]
025	133.5 [5.26]
028	132.7 [5.22]
035	136.5 [5.37]
045	136.5 [5.37]
059	139.5 [5.49]
073	142.8 [5.62]
089	146.4 [5.76]
097	148.2 [5.84]
113	151.7 [5.97]
141	158.1 [6.22]
179	166.7 [6.56]
226	177.1 [6.97]
451	228.0 [8.98]

SYM	REVISION	BY	DATE	ECN
A	ENGINEERING RELEASE	RLL	11-10-87	14736
E	REVISED	JMM	9-15-94	25972
F	-1) <4C> WAS 3.28/83,4 MAX -2) <4B> WAS 3.28/83,4 MAX	SJP	04-07-04	46856
G	REVISED	VBH	6-11-09	M76183
H	-1) REVISED PICTORIALY -2) <4D> UPDATED TABULATION FOR G MAX -3) UPDATED NOTE 2 AS PER ESP-022-69	AAB	02-17-14	0054755
J	<1C> ADDED DANFOSS LOGO TO END CAP	AAB	01-22-15	0061684
K	<3A> NOTE 3 WAS CASE DRAIN : 0...	JVD	07-27-15	0065202
L	<1C> REMOVED DANFOSS LOGO	SSD	04-23-21	0131343



- NOTE:**
- ROTATION:**
STANDARD; WHEN FACING SHAFT END OF MOTOR, SHAFT TO ROTATE CLOCKWISE WHEN PORT "A" IS PRESSURIZED. COUNTERCLOCKWISE WHEN PORT "B" IS PRESSURIZED.

REVERSE ; WHEN FACING SHAFT END OF MOTOR, SHAFT TO ROTATE COUNTERCLOCKWISE WHEN PORT "B" IS PRESSURIZED. COUNTERCLOCKWISE WHEN PORT "A" IS PRESSURIZED.
 - MOUNTING FLANGE:**
BA = 4 BOLT STD: 44.40 [1.748] DIA. X 3.05 [1.20] PILD.
.375-16 MOUNTING HOLES DN 82.55 [3.250] DIA. B.C.
 - CASE DRAIN:**
00 = NO CASE DRAIN

REVIEWED FOR CLASSIFICATION PER ESP-042

UNLESS OTHERWISE SPECIFIED ALL DIMENSIONS ARE IN INCHES INCHES (MILLIMETERS)

DRAWING BASED ON ANSI Y14.5M-1982

THE REPRODUCTION, DISTRIBUTION, AND UTILIZATION OF THIS DOCUMENT, AS WELL AS THE COMMUNICATION OF ITS CONTENTS TO OTHERS WITHOUT EXPLICIT AUTHORIZATION IS PROHIBITED. OFFENDERS WILL BE HELD LIABLE FOR THE PAYMENT OF DAMAGES. ALL RIGHTS RESERVED IN THE EVENT OF THE GRANT OF A PATENT, UTILITY MODEL, OR DESIGN. (PER ISO 10016)

Danfoss

TOLERANCES
 .X ± ---
 .XX ± REF
 .XXX ± ONLY
 < ± ---°

UNSPECIFIED RADII ARE: ---

UNSPECIFIED DRAFT ANGLES ARE: ---°

C SIZE

DO NOT SCALE

THIRD ANGLE PROJECTION

SCALE 1/1

NUMBER
A-37-316

SCALE 1/1 SHEET 1 OF 1

ARITHMETICAL AVERAGE

250

ENGRG WCW BY/DATE 1-18-88
 METALLURGY BY/DATE ---
 DRAWN RLL BY/DATE 10-22-87
 CHECKED KG BY/DATE 1-18-88

MATERIAL/HEAT TREAT ---

TITLE
H MOTOR INSTALLATION