

DISPLACEMENT CODE	G MAX
022	132.7 [5.22]
025	133.5 [5.26]
028	132.7 [5.22]
035	136.5 [5.37]
045	136.5 [5.37]
059	139.5 [5.49]
073	142.8 [5.62]
089	146.4 [5.76]
097	148.2 [5.84]
113	151.7 [5.97]
141	158.1 [6.22]
179	166.7 [6.56]
226	177.1 [6.97]
451	228.0 [8.98]

SYM	REVISION	BY	DATE	ECN
A	ENGINEERING RELEASE	RLL	11-18-87	14736
K	(1C)REMOVED DANFOSS LOGO	SSD	04-23-21	0131343

D

D

C

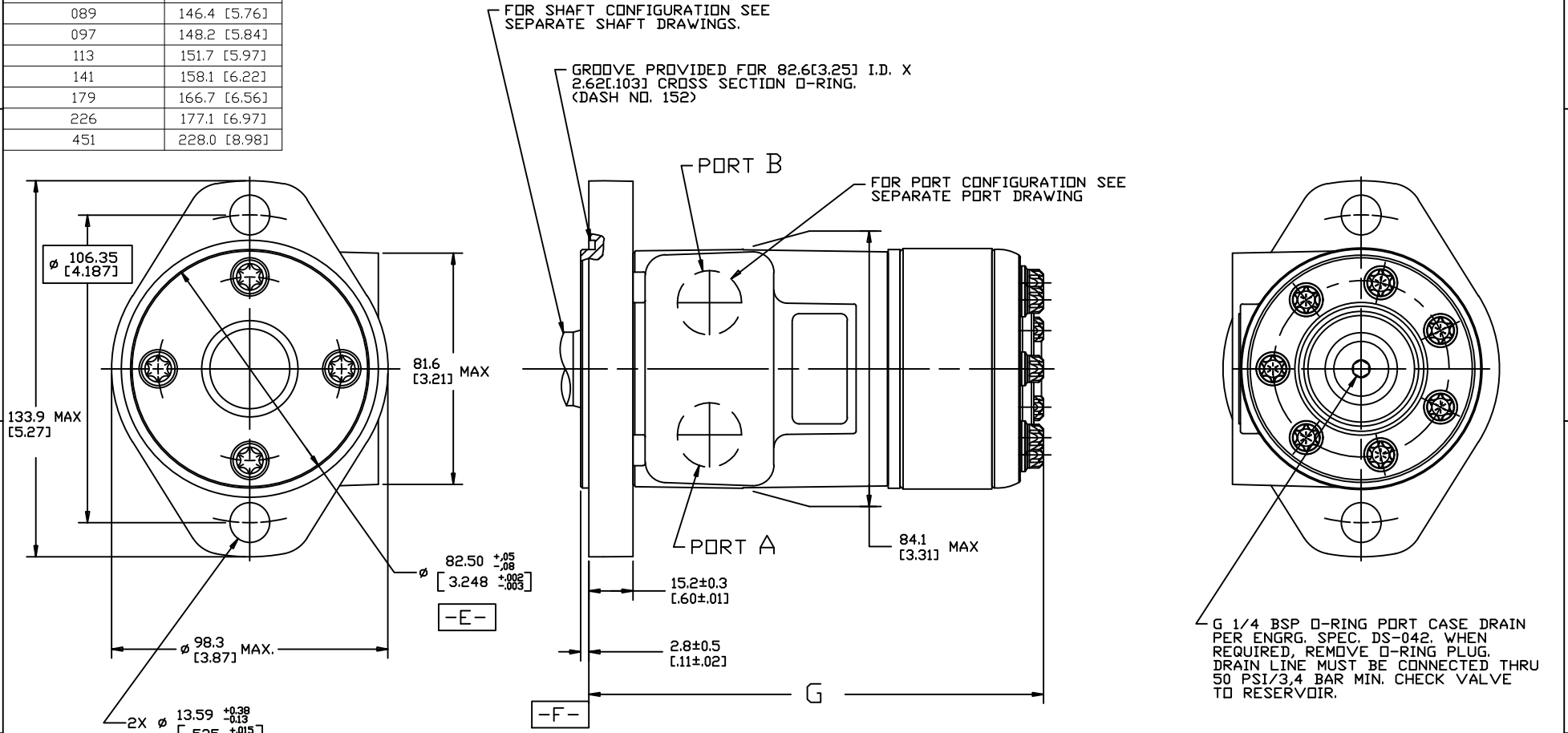
C

B

B

A

A



- NOTE:
- ROTATION: STANDARD; WHEN FACING SHAFT END OF MOTOR, SHAFT TO ROTATE CLOCKWISE WHEN PORT "A" IS PRESSURIZED. COUNTERCLOCKWISE WHEN PORT "B" IS PRESSURIZED. REVERSE ; WHEN FACING SHAFT END OF MOTOR, SHAFT TO ROTATE CLOCKWISE WHEN PORT "B" IS PRESSURIZED. COUNTERCLOCKWISE WHEN PORT "A" IS PRESSURIZED.
 - MOUNTING FLANGE: AA = 2 BOLT STD; 82.50 [3.248] DIA. X 3.05 [1.20] PILOT, 13.59 [0.535] DIA. MOUNTING HOLES ON 106.35 [4.187] DIA. B.C.
 - CASE DRAIN: 02 = G 1/4 BSP STRAIGHT THD PORT (END CAP)

REVIEWED FOR CLASSIFICATION PER ESP-042

DRAWING BASED ON ASME Y14.5M 1982

THE REPRODUCTION, DISTRIBUTION, AND UTILIZATION OF THIS DOCUMENT, AS WELL AS THE COMMUNICATION OF ITS CONTENTS TO OTHERS WITHOUT EXPLICIT AUTHORIZATION IS PROHIBITED. OFFENDERS WILL BE HELD LIABLE FOR THE PAYMENT OF DAMAGES. ALL RIGHTS RESERVED IN THE EVENT OF THE GRANT OF A PATENT, UTILITY MODEL, OR DESIGN. (PER ISO 15016)

Danfoss

UNLESS OTHERWISE SPECIFIED ALL DIMENSIONS ARE IN INCHES <input type="checkbox"/> MILLIMETERS (INCHES) <input checked="" type="checkbox"/>	DRAWN RLL 10-21-87		MATERIAL/HEAT TREAT
TOLERANCES	CHECKED KO 1-21-88	-	
X ± ----	UNSPECIFIED RADII ARE: ---	TITLE H MOTOR INSTALLATION	
XX ± ----	ENGRG VCV 1-25-88	-	
XXX ± ----	METALLURGY BY/DATE	-	
< ± ±	UNSPECIFIED DRAFT ANGLES ARE: ---	NUMBER A-37-314	
THIRD ANGLE PROJECTION DO NOT SCALE	ARITHMETICAL AVERAGE	SCALE 1/1 SHEET 1 OF 1	